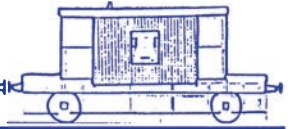




# TRACTION & ROLLING STOCK



No 151 April - May 2024

## ADVERTISER

[www.tractionads.co.uk](http://www.tractionads.co.uk)

Crofton on Avon & Somerset Canal



## CRAFTMASTER PAINTS

The UK's Leading  
Heritage Paint Supplier

Supplying traditional Coach  
Enamel in authentic colours to  
preserved railways nationwide.

Discounts available for Railways,  
Heritage Groups and Engine  
Owners. Please contact us for a  
pricelist.

01954 231 308

[www.craftmasterpaints.co.uk](http://www.craftmasterpaints.co.uk)

[info@craftmasterpaints.co.uk](mailto:info@craftmasterpaints.co.uk)



**AD Castings Ltd**  
 Specialising in various grades of bronze, aluminium and brass. Pattern making services available with a very quick and efficient turn around.  
**Bronze castings suppliers to Flying Scotsman**  
 Wellington Mill, Bolton Rd, Blackburn BB2 3PZ 01254 59577  
[www.adcastings.co.uk](http://www.adcastings.co.uk)

**Avonside 1919 of 1924 Cranford FOR HIRE**



Ex Staveley Coal & Iron Co, Staveley ironstone quarry, Cranford quarry before restoration started at Foxfield railway and completion at AFRPS in Scunthorpe. Including new smoke box, new throat plate, new outer side to the fire box and new copper sides to the inner firebox. Finally, all painted and put back into traffic in late 2016. In early 2022 the loco was repainted, lined out and lacquered by Phil Anderson. Phone, Chris **07740632995** or Simon **07917153801** or both available on **01724 281314**

**Refractories & High Temperature Insulation Materials**



**VITCAS**

- Premium IP Luting Compound for sealing white metal bearings.
- Fire Bricks and Refractory Castables for the brick arch.
- Ceramic Fibre Insulation for boilers.

Bristol  
 0117 9117895  
[www.vitcas.com](http://www.vitcas.com)

**SAWFORD**




**SAWFORD ENGINEERING LIMITED**  
 PRIORS HAW ROAD  
 WELDON NORTH IND. EST  
 COBBY  
 NORTHANTS  
 NN17 5JG  
 TEL: (01536) 263211  
 FAX: (01536) 406266  
 E-MAIL: [sales@sawfordengineering.co.uk](mailto:sales@sawfordengineering.co.uk)  
[www.sawfordengineering.co.uk](http://www.sawfordengineering.co.uk)  
 sales@sawfordengineering.co.uk  
[www.sawfordengineering.co.uk](http://www.sawfordengineering.co.uk)

THE TOTAL ENGINEERING SOLUTION FOR INDUSTRY

We offer design, repair and overhaul of components including reverse engineering, manufacture from drawings & machining of your own components. Facilities include multi-axis machining utilising both conventional and CNC equipment.

**TREFOIL STEEL Co Ltd**  
 TINSLEY SHEFFIELD S9 1QQ  
 Ph 01709 830701 Fx 01709 830737  
 e-mail [info@trefoilsteel.com](mailto:info@trefoilsteel.com)  
**SUPPLIERS TO THE RAILWAY INDUSTRY**  
 Patterns, Castings and Machining Supplied.  
 In small to medium batch quantities.  
[www.trefoilsteel.com](http://www.trefoilsteel.com)

**Multiple Pneumatic valves**  
 for EP Signalling System. If not sold will be scrapped. FOR SALE, any interest please e-mail  
[enquiries@churnetvalleyrailway.co.uk](mailto:enquiries@churnetvalleyrailway.co.uk)



**Mk 2 E&&F Air-Con Coaches FOR SALE**

**WEST COAST RAILWAYS**

6151 - MK2F - TSO	6134 - MK2F - TSO	1252 - MK2F - FO
5925 - MK2F - TSO	6154 - MK2F - TSO	1253 - MK2F - FO
6073 - MK2F - TSO	6029 - MK2F - TSO	
5815 - MK2E - TSO	5888 - MK2E - TSO	
5958 - MK2F - TSO	6045 - MK2F - TSO	
6009 - MK2F - TSO	5978 - MK2F - TSO	

All are Based at Southall Depot and are open to Bids (lots preferred)  
 Closing Date will be **April 19th 2024**  
 Buyer/s will Collect from Southall

These Carriages will be sold as seen and where lying without any warranty, condition or undertaking including (without limitation) as to quality, position in any programme or cycle of maintenance, or fitness for a particular purpose.

Please contact Paul or Ian at West Coast Railways to organise Viewings on **01524 734708**

## **MJS PRECISION MACHINING LTD**

CNC TURNING, MILLING, BORING,  
NEW PARTS OR REPAIR WORK  
CARRIED OUT TO DRAWINGS OR FROM  
SAMPLE PARTS ONE OFFS OR BATCH WORK  
Loughborough  
[mjsprecisionmachining@outlook.com](mailto:mjsprecisionmachining@outlook.com)  
Facebook page mjs precision machining ltd



*European Agents & Distributors of Locomotive Horns from*  
**AIRCHIME**

Sales-Overhaul-Maintenance

Pressure gauges, Horn control & Check valves,  
Horns & Whistles

Units 8-9, Genesis Business Park, Midland Way, Nottingham, NG7 3EF  
Tel 0115 978 5333 Fax 0871 750 2387  
Sales@trentinstruments.co.uk

[www.trentinstruments.co.uk](http://www.trentinstruments.co.uk)

## **ALUMINIUM WINDOWS**

*Kellett  
Engineering  
Company  
Limited*



*Jasper Street Works, Queens Road, Halifax HX1 4NT*



Since 1946 Kellett have been designing & producing a wide range of quality framed aluminium windows for trains, locos, and many other varieties of commercial, industrial vehicles and buildings.

Please contact us, see below for details :-

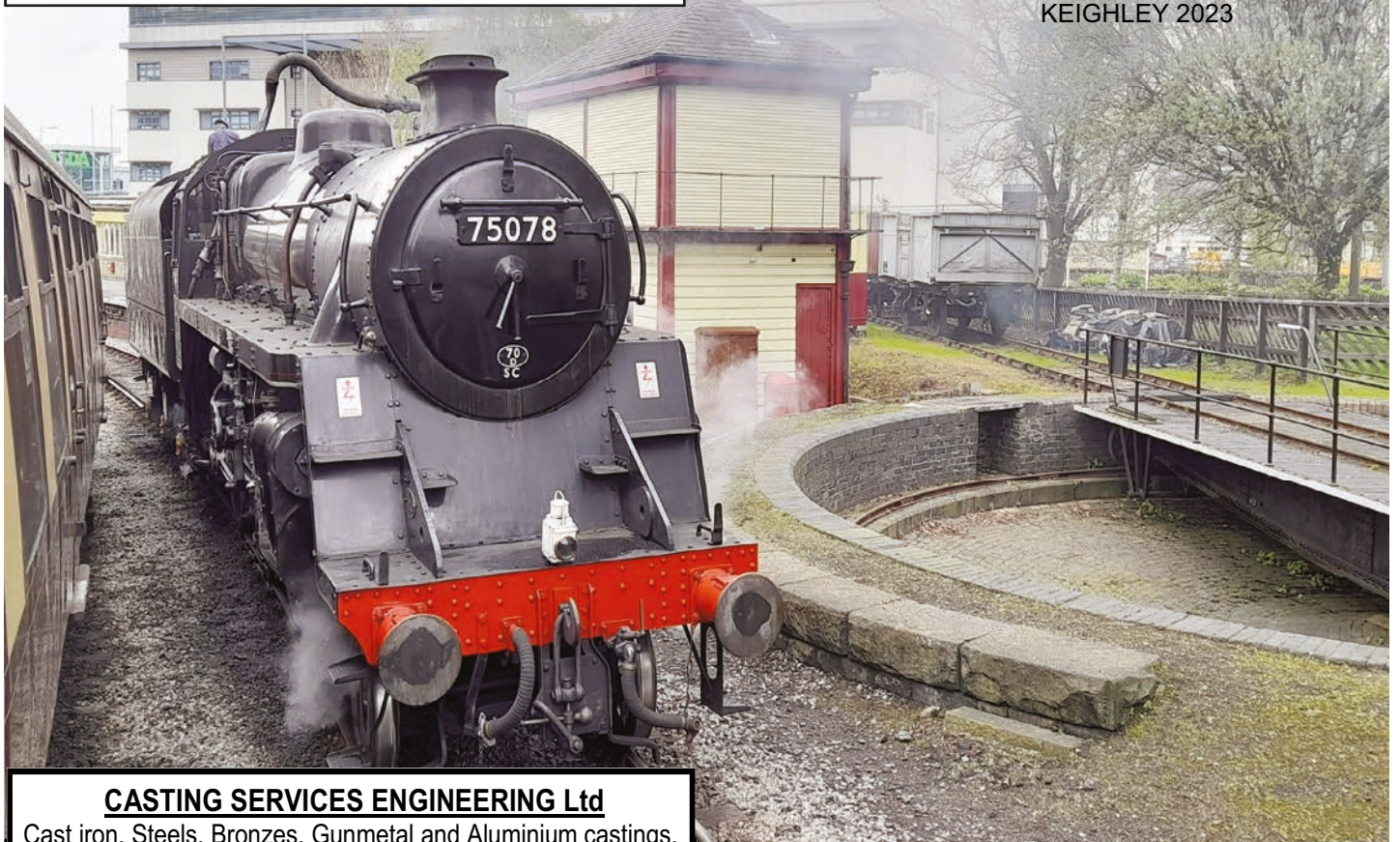
[www.kellettwindows.co.uk](http://www.kellettwindows.co.uk)

sales@kellettwindows.co.uk

tel 01132 639041 or mobile 07445 425228

Victoria Inman (Managing Director)

KEIGHLEY 2023



## **CASTING SERVICES ENGINEERING Ltd**

Cast iron, Steels, Bronzes, Gunmetal and Aluminium castings.

Manifolds, Brake shoes, Axle bearings, Firegrates, etc.

Restoration work, replacing worn or damaged parts.

Little or no tooling costs. Castings in virtually any material.

Full patternmaking, conventional & CNC machining facilities.

Existing castings repaired. Welding or cold processes.

We can help design or manufacture from sample or drawing.

Urgent requirements with 24 hour turnaround possible.

Give us a call to discuss your requirements, no job too small.

**Casting Services, Mob 07722 277631. Fax 0116 2102647**

**64 Highway Road, Thurmaston, Leicester, LE4 8FQ.**

**casting.services@ntlworld.com [www.casting-service.co.uk](http://www.casting-service.co.uk)**

Parts Made or Refurbished

One-offs or Batches

Turning, Boring, Milling, Grinding etc.

Tool, Cutter & Drill Sharpening

## **John Dunn Engineering**

**Precision Engineers**

01430 - 424957

[theworks@johndunnengineering.co.uk](mailto:theworks@johndunnengineering.co.uk)

[www.johndunnengineering.co.uk](http://www.johndunnengineering.co.uk)

## LOCOMOTIVE SERVICES

With over 51 years of experience in the industry, we are the go-to specialists for all your steam renovations and general engineering needs.



Equipped with state-of-the-art CNC turning and milling machines, we can handle projects of any size!

CNC Turning Capacity – 2000mm Ø x 1200mm

CNC Milling Capacity – 4500mm (x) x 1500mm (z) x 1000mm

- Wheels, reprofiled, regauged, retired (up to 45")
- 240 ton horizontal press
- Crank pins replaced
- Faro Arm coordinate inspection
- Copper/Steel Boiler plates
- Bespoke axels to your requirements
- Reverse engineer with our CAD services

email: [technicalcentre@cmscepcor.com](mailto:technicalcentre@cmscepcor.com)

or call: 01530510247



**FOR SALE**

Mark One Coaches

SK W24825 Built 1955 & BSK W35012 Built 1957

Currently out of traffic and sold as seen

All enquiries to view:

Paul Booker Head of Engineering Tel: 07453771751

Offers by February 13th. to:

Matt Bowen, Company Secretary, Gwili Railway Co. Ltd

Carmarthen SA33 6HT

VAT will be charged at the current rate



**The Vale of Berkeley Railway Trust Engineering Services**

Help us build up our Engineering contract work! Our comprehensively equipped machine shop at our base at Sharpness is building a reputation for the quality work. One-offs a speciality. Staff some with aerospace engineering experience & international rail companies, General Milling & Turning (6 feet between centres /40in dia) Gear Cutting; Surface Grinding (up to 12in dia.)

Machine Shop Manager: [Graham Sturgess](mailto:Graham.Sturgess@valeofberkeleyrailway.com)  
[valeofberkeleyrailway@gmail.com](mailto:valeofberkeleyrailway@gmail.com)



## WANTED

Private enthusiast looking to acquire the following for preservation on a private siding;

0-4-0DH or DE Shunter, Double Ended Veranda Style Brake Van, Wooden Cattle Wagon, Wooden Coal Wagon, Fuel/Oil Tanker, all circa 1950's/60's, any condition considered.

Contact Steve on 07780 330600 or [stephen.dunn60@icloud.com](mailto:stephen.dunn60@icloud.com)



**17D**

Precision Engineering :: CNC Machining

One offs, small batches, or quantity  
Call us to discuss your requirements

---

[17d-engineering.co.uk](http://17d-engineering.co.uk)    01629 825070

## Tested Spring Co Ltd

Round, square & rectangular section springs for **Locomotives, Carriages and Wagons.**

Suspension, Buffers, Valves, Piston glands & doors etc.call

Mark Woodward

Phone **0121 557 2308**, Fax **0121 557 4031**

Visit or leave an enquiry at [www.testedspring.com](http://www.testedspring.com)

# The Light Railway Engineers

ESTABLISHED OVER  
**50**  
YEARS

**FROM THE HISTORIC TO THE LATEST  
ZERO-EMISSION E-LOCOMOTIVES  
WE ARE THE NARROW-GAUGE EXPERTS**



## Unrivalled for expertise, service & back-up

From the latest battery & diesel locomotives & carriages, to historic restoration projects; we can maintain and supply spares as well as be on-site when you need us for servicing, surveying, design & track laying. Whatever your narrow-gauge project, talk to us for the friendliest expert advice, service and uncompromising back-up.



**Alan Keef Ltd**

Call - 01989 750757  
Email - [sales@alankeef.co.uk](mailto:sales@alankeef.co.uk)  
Or visit [www.alankeef.co.uk](http://www.alankeef.co.uk)

## NBR ENGINEERING SERVICES LIMITED DARLINGTON

### Boiler Manufacture

Fully Welded Construction' Our price includes, Design, obtaining UKCA or CE Approval & manufacture by our in-house design, fabrication and welding team. A one stop, from small Standard Gauge to large 10.25" Max diameter is 42" Min is 10" Contact David with your requirements **0330 111 0824** or [david@nbres.co.uk](mailto:david@nbres.co.uk)



- MATERIAL HANDLING
- ROLLING STOCK STORAGE & MAINTENANCE
- BATTERY SHUNTER HIRE
- TRAINING
- FABRICATION & WELDING
- RAIL WAGON CLEANING
- CET AND FUELLING
- SHOT BLASTING AND PAINTING

Contact details  
[mark@mclrail.co.uk](mailto:mark@mclrail.co.uk)  
[www.mclrail.co.uk](http://www.mclrail.co.uk)  
Tel: 020 3280 6390



# HETHERINGTON OIL CAN COMPANY

EMAIL: [r.mills@hetheringtonlamp.co.uk](mailto:r.mills@hetheringtonlamp.co.uk)

WEBSITE: [www.hetheringtonlamp.co.uk](http://www.hetheringtonlamp.co.uk)

Pump Oil Can  
7" Spout  
1/2 Pint



LMS Type  
Oil Feeder  
1 1/4 Pint



Oil bottle  
4 Pint - 8 Pint



Pump Oil Can  
24" Spout -  
1 Pint



Conical  
Oil Pouter  
1 - 2 Pint



Tundish



Oil Feeder  
2 1/4 Pint



Oil Pouter  
1/2 - 1 or 2 Pint



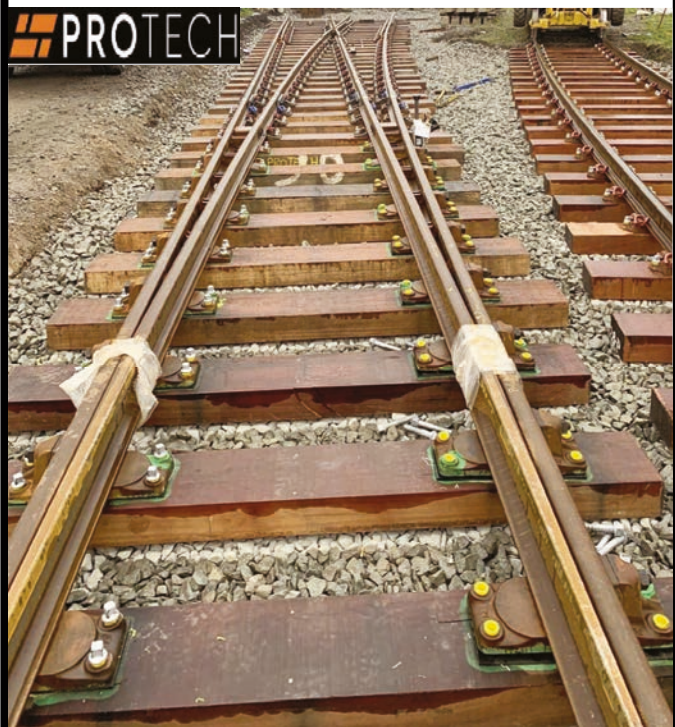
Two ex-Swindon Works trollies 1 ton load capacity.  
£175-00 each or two for £300-00 (Not contents).



**Tube Expander** Wicksteed  
W13 approx. 4" diameter  
£150.00. located in Swindon.

### **BV8 RH Turnout on Timber**

new and unused. £47.5k ono  
As per standard RE/PW/636 drawing.



Contact Dan 07502 377913.  
[Daniel.rivers@protechrail.co.uk](mailto:Daniel.rivers@protechrail.co.uk)

## **MUDFORDS LTD**

**PVC & CANVAS**  
SHEETS, COVERS & CANOPIES  
MANUFACTURED TO SIZE

**SUPPLIERS OF LOADSTRAPS & LIFTING SLINGS**

Email: [sales@mudfords.co.uk](mailto:sales@mudfords.co.uk)

Tel: 0114 243 3033

Fax: 0114 244 4536

Website: [www.mudfords.co.uk](http://www.mudfords.co.uk)

## **Heritage Transport Supplies Ltd**

### **SAFETY MANAGEMENT SYSTEMS.**

I can advise on, prepare or audit Safety Management Systems (SMS) and Competency Management Systems (CMS). I specialise on the training and assessing of Safety Critical (SC) staff. I have an extensive portfolio of this type of work and

I now cover a wide range of heritage railways, standard and narrow gauge, plus some commercial railway operations and new build loco projects. Please call to discuss your specific requirements.

### **For sale – standard gauge**

Drewry diesel locomotive, 0-4-0 DM built 1947.

Gardner 6L3 engine. Running condition but gearbox issues. Very tidy loco.

New **GWR loco Steam whistles** – large and small type will sell singly.

Contact Martyn Ashworth for further details on  
**01509 219725** or **07798 916115** o  
email [martynhts@btinternet.com](mailto:martynhts@btinternet.com).

Purton, River Seven



### **Graham Morris Engineering Ltd**

New boilers designed and approval obtained.  
Steam locomotive boiler inspections undertaken.  
Diesel locomotive air reservoirs examined in situ.

**Graham Morris** BSc, CEng, MIMechE  
01327 872148, [graham@gmel.co.uk](mailto:graham@gmel.co.uk)

**w.h.tildesley Ltd**

Drop Forging Specialist

LRQA  
CERTIFIED  
ISO 9001

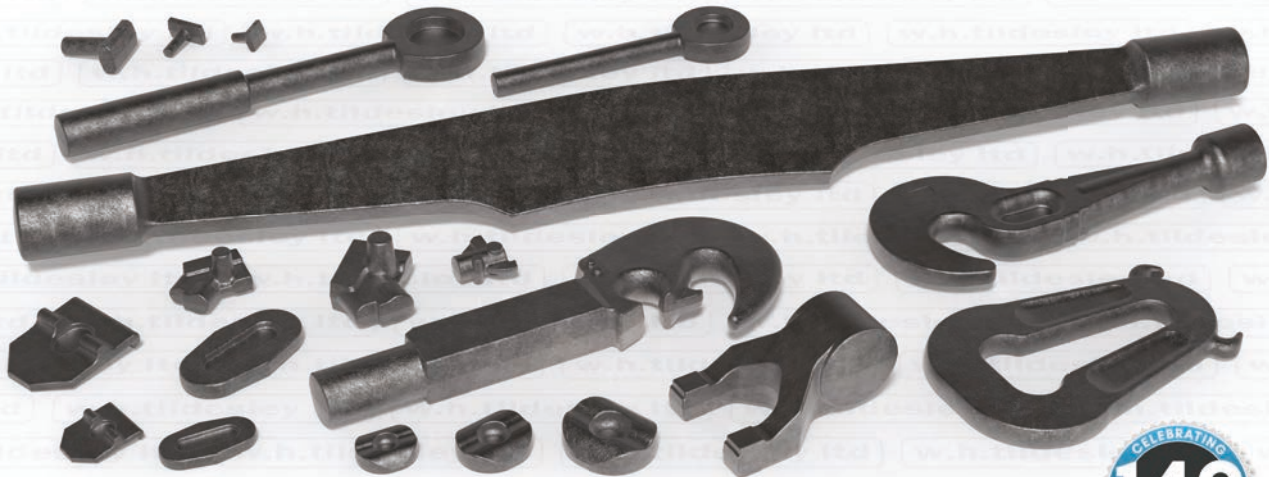
LRQA  
CERTIFIED  
AS 9100

LRQA  
CERTIFIED  
ISO 14001



# LOCOMOTIVE FORGINGS

- ▶ SPECIALIST MATERIALS
- ▶ COMPLEX FORGING SHAPES
- ▶ SMALL BATCHES A SPECIALITY



ENGINEERING SOLUTIONS SINCE 1874



www.whtildesley.com | tel: +44 (0)1902 366440 | fax: +44 (0)1902 366216 | email: sales@whtildesley.com

# TRAINWEIGH

RAIL WEIGHING SOLUTIONS



## SALES HIRE



Tel: +44 114 321 63 64

Email: [trainweigh@weighbridgeservices.com](mailto:trainweigh@weighbridgeservices.com)

Web: [www.trainweigh.com](http://www.trainweigh.com)



# Supplying the Locomotive Industry



We are a family run foundry producing high quality, competitively priced castings since 1982 in Gunmetal, Cast Iron, Phosphor & Aluminium bronzes, Brass, Copper and Aluminium grades We specialize in bar, tube, square, hexagon and flat



Call us on:- **01902 636674**

E-Mail us at:- [sales@abbeyspuncast.co.uk](mailto:sales@abbeyspuncast.co.uk)

Visit our website:- [www.abbeyspuncast.co.uk](http://www.abbeyspuncast.co.uk)







**Swindon built 15 Ton Lomac**  
No B905114 Built 1958, Vacuum fitted, roller bearings, recently re-planked, kept under cover.



**6 Wheeled Chassis Frame**  
with Vacuum brakes

**10<sup>1/4</sup> diesel hydraulic**  
Re- gaugeable, lightweight



**Three 10<sup>1/4</sup> gauge coaches**  
Set of three air braked with soft seats and lockable doors



**Ruston 6EYXL air start**  
Complete with Rockford Clutch



**Box van body**  
in good condition

**07768 857189**  
[rayking@tractionads.co.uk](mailto:rayking@tractionads.co.uk)

# PISTON RINGS <sup>UK</sup> LTD



Supplier of Piston and Valve rings to the heritage Locomotive sector. Trusted since 1877, Piston Rings UK was known as Lockwood & Carlisle. Now partnered with Riley and Sons & the official supplier of rings on the world-famous Flying Scotsman, so you can be assured of our quality.

We specialise in low volume, custom built rings to suit your requirements. We can offer design and technical input to make sure you get the correct solution for you needs. We prioritise customer service as a core value, which our existing customers would be happy to recommend.

Contact Simon & the team at Piston Rings UK for a free quotation today.

01709 820 007 07749 5555 40 [sales@pistonrings.co.uk](mailto:sales@pistonrings.co.uk)

Lockwood & Carlisle Daros Industrial Rings UK Standard Piston Rings



Piston Rings UK Ltd, Unit 5 Coggin Mill Way, Rotherham, S60 1FB

## Railway Wheelset & Brake Ltd

Suppliers of Railway Axles, Wheels, Tyres & Heritage Rail Components

**Introducing our expanding range of carriage and wagon components**



Overhaul kits for all sizes of Vacuum Cylinder & Associated Valves



Vacuum Brake Hose  
To any required size



Huge selection of Vacuum Cylinder components



Steam Heat components



Vacuum Brake components

### Bespoke Items

- Complete Vacuum Cylinders
- Passenger Communication Valves
- Dummy Couplings
- Guard's Brake Valves
- Release Valves
- and many more.

### Brake Blocks & Air Brake Components

We are also suppliers of a variety of Brake Block types and UIC Air Brake Components.



### Contact

[sales@railwaywheelset.co.uk](mailto:sales@railwaywheelset.co.uk) - 0114 303 0705 - [www.railwaywheelset.co.uk](http://www.railwaywheelset.co.uk)

Don't forget to check out our catalogue on our website!



## HERITAGE MOTION CORKS

Vented & non-vented  
many sizes catered for.

UK made

Please call for details,  
Tristan 07765 666444

[tristanbishopsmith@gmail.com](mailto:tristanbishopsmith@gmail.com)



**For Sale** – Ransoms & Rapier 45 Ton  
Steam Breakdown/Engineering Crane



Restoration project, ex Kings Cross / Tinsley.  
Bought as seen, buyer to remove from Railway.

Enquires please to [MPD@NYMR.co.uk](mailto:MPD@NYMR.co.uk)



Black Plastic Coated Steel

We can de-coil it to make  
about 130 off 6ft x 1m x (0,7mm)  
heavy sheets in either  
corrugated or profiled steel  
Would look good on/around  
Heritage Stations /Goods Sheds  
\*We can also decoil to required  
lengths for large orders

**MANNBUCK STEELS LTD**  
CALL BILL 07770446675 / 01277364344  
[mannbuckandco@aol.com](mailto:mannbuckandco@aol.com)

## Hudswell Clarke 0-6-0ST

In need of full restoration, Currently sited East Mid-  
lands, Viewing available by arrangement, Priced to  
sell, For further details contact

**07881 727611** [sinclair.brothertoft@gmail.com](mailto:sinclair.brothertoft@gmail.com)

Wareham at the end of the  
Swanage services 2023





### Contacts & Opening Hours

Sales Office: 01489 570737  
E-mail: sales@heritagesteamsupplies.co.uk

**Monday-Friday** 7:30am-4:30pm  
**Saturdays** 8am-12 Noon

\*Inc VAT & UK Mainland Only. Maximum Shipment Weight 30kg.



**IF IT'S IN STOCK**  
- NEXT DAY DELIVERY

Order by 3pm  
Mon-Fri  
not including weekends. Excludes  
circumstances out of our control.

**NO HIDDEN COSTS**

Applies to Online Orders only. Unless otherwise stated all prices exclude VAT | E & O.E.

## LARGEST STOCKIST OF TOPOG-E & BLUE MAX BOILER DOOR JOINTS

### THE STEAM BOILER INDUSTRY'S STANDARD GASKETS

Maximum Temperature: 208°C	Recommended Working Pressure up to: 250PSI (17 Bar)
----------------------------	---

**SPECIFICALLY FORMULATED TO MEET AND EXCEED EXTREME DEMANDS AND DELIVER INDUSTRY STANDARD PERFORMANCE**



**TOPOG-E**  
HERITAGE STEAM SUPPLIES  
OFFICIAL STOCKIST AND DISTRIBUTOR

#### MATERIAL DESCRIPTION

SPECIAL, PROPRIETARY RUBBER COMPOSITION, BLACK, 80-85 DUROMETER.



**LARGEST STOCK OF TOPOG-E AVAILABLE**

## BLUE-MAX

Maximum Temperature: 260°C	Maximum Working Pressure: 450PSI (Steam)
----------------------------	--

- ZERO LEAKAGE UNDER PRESSURE
- EASILY REMOVED
- SIZES CLEARLY MARKED
- INTERCHANGEABLE SIZES
- MAXIMUM SEALING ON ROUGH SURFACES
- CHEMICAL-RESISTANCE
- EXTENDED SHELF LIFE
- EASY, PROBLEM FREE INSTALLATION



Engineered to provide all the durability, resilience and sealing properties of an asbestos gasket, but without the asbestos.

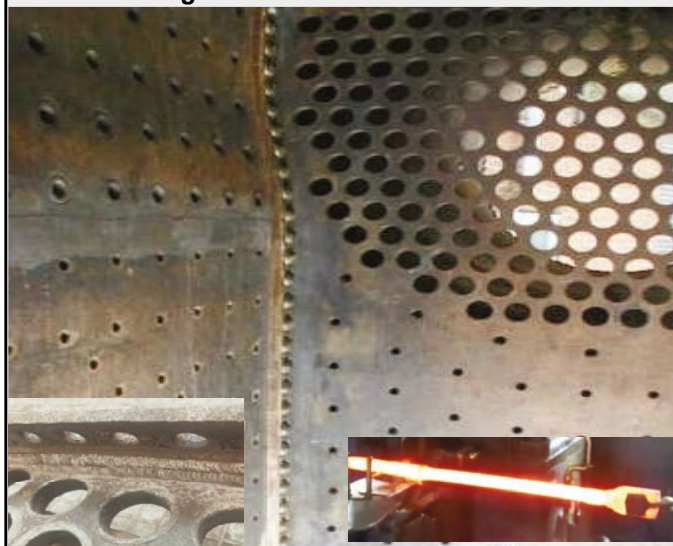
A Blue-Max gasket is manufactured from a proprietary tacky cloth of glass, synthetic fibres and brass wire impregnated with a blue elastomer compound.

The Material is cut and formed to the desired size and shape and then coated with a proprietary Teflon material per MIL SPEC T-27730A.

**A Single Source Solution** – [www.heritagesteamsupplies.co.uk](http://www.heritagesteamsupplies.co.uk)

### HERITAGE RAIL TRACTION Ltd

**STEAM LOCOMOTIVE ENGINEERS** Specialising in:  
*Boiler Overhaul and Repair inc Coded Welding  
Copper and Steel Cylinder Boring and Liners.  
In- house Open Forging. Machined Casting supply.  
Full Mechanical Overhaul, Large Fabrication,  
Precision and Heavy Machining  
Patternmaking, Running Repairs, On-Site Services,  
Swaged Bottle Ends & Flue Tubes*



[www.heritagetrailtraction.co.uk](http://www.heritagetrailtraction.co.uk)

01204 396320 [Enquiries@heritagetrailtraction.co.uk](mailto:Enquiries@heritagetrailtraction.co.uk)

### Traction & Rolling Stock Advertiser

Sent out FREE to

Heritage Railways, Industrial Railways, Tram & Metros Systems also most Main Line Railways in the UK and their contractors or agents. Produced every two months, acting as a trade directory for Managers, Engineers and other decision makers as a handy reference.

Published the first week of Feb, April, June, Aug, Oct & Dec.

All adverts go onto our site [www.tractionads.co.uk](http://www.tractionads.co.uk)

B&W, vehicles, parts and services start at £45 (double column width) 3cm depth

Editor, Ray King. Admin, Davina King. Website hosted by Datatech DTP. Phone 07768 857189

82 Louies Lane, Diss, IP22 4QN

[rayking@tractionads.co.uk](mailto:rayking@tractionads.co.uk) *note new email*

Closing date for the next issue 28th May 2024

\*The details advertised in this publication have been supplied by the advertisers and Traction & Rolling Stock Advertiser cannot guarantee the details or the ownership of any vehicles or parts advertised. It is the responsibility of the reader to Independently check the quality and accuracy of services advertised. Date protection. We hold the minimum amount of personal data for the purposes of sending our advertising paper to people interested in railways. We do not share any personal data with any third party. Any named person receiving this paper who wishes their name removed from our records please phone, email or write to the above address. We do not normally send to individuals home address unless requested, by society chairman or other railway officials.

**Special price for heritage railway vehicle adverts**

## Higham's Heritage Engineering

We are a family-run business, specialising in Heritage Engineering;

We offer a range of services to suit the requirements of Heritage Railways and Traction Engine Owners.

Our services are;

- \*Fitness to run exams
  - \*Boiler/Air receiver inspections in line PSSR 2000
  - \*Locomotive Repair/maintenance,
  - \*Carriage repairs/maintenance,
  - \*Covering Steam or Diesel at competitive rates
- for information contact Matthew Higham



The Visitor Transportation & Engineering Specialists

Heritage Style Coaches and Period Locomotives

Custom Designs Built To Client Specifications

Refurbishments and Renovations

Maintenance and Servicing



E: [sales@severn-lamb.com](mailto:sales@severn-lamb.com)

W: [www.severn-lamb.com](http://www.severn-lamb.com)

T: +44(0) 1789 400 140

*Established in 1947*

*Enjoyed by Generations*

