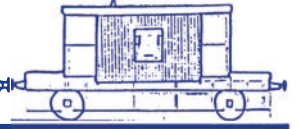




# TRACTION & ROLLING STOCK



No 156 Feb - March 2025

## ADVERTISER

[www.tractionads.co.uk](http://www.tractionads.co.uk)



- MATERIAL HANDLING
- ROLLING STOCK STORAGE & MAINTENANCE
- BATTERY SHUNTER HIRE
- TRAINING
- FABRICATION & WELDING
- RAIL WAGON CLEANING
- CET AND FUELLING
- SHOT BLASTING AND PAINTING

Contact details  
 mark@mclrail.co.uk  
 www.mclrail.co.uk  
 Tel: 020 3280 6390



### SUTTON CASTINGS

BRASS, BRONZE,  
 ALUMINIUM AND IRON  
 SAND CASTINGS

**Sutton Castings,**  
 Oxtou, Nottinghamshire.  
 (by appointments only)  
 07527 851645  
[suttoncastings@yahoo.com](mailto:suttoncastings@yahoo.com)  
[www.suttoncastings.co.uk](http://www.suttoncastings.co.uk)

We do general engineering castings to include the following for the steam preservation

Cylinder blocks, Brake Blocks,  
 Shaft and Axle bearings, Firebars,  
 Chimneys, Wheels, Pistons,  
 Steam valves & boilers fittings,  
 Namlates, Architectural posts and  
 bollards. CNC &  
 traditional pattern making.

Materials to include, All grades of  
 grey iron, Copper based alloys and  
 Aluminium alloys



### Granite Sets & Track Rubbers £1 each

(Plus much more)

A vast range of other  
 railway equipment  
 concrete sleeper,  
 flat bottom rail,

Plus signalling cabinets and signal etc

Call [mikeurry@mac.com](mailto:mikeurry@mac.com) Reepham & Whitwell Railway







### Rail Equipment-Analogue & Digital Meters

Including audible warning systems, pressure and temperature equipment, manufactured/maintained.

Units 8-9, Genesis Business Park, Midland Way, Nottingham, NG7 3EF

Tel 0115 978 5333 Fax 0871 750 2387

Sales@trentinstruments.co.uk

www.tentinstruments.co.uk & www.reauk.com



Check the web sites



### Hawksworth Brake Third 2225

2225 was one of the last GWR designed coaches supplied to BR after nationalisation. Withdrawn in 1966, converted to departmental use before coming to Wallingford in 1988. Having stood outside, the vehicle is in poor condition. Whilst eminently restorable, would require considerable time/effort. Some original parts remain inside.

### Hibberd No.3270/1948 'Carpenter'

This 0-4-0 Diesel mechanical locomotive. Ex Park Royal and Guinness. The locomotive is in sound condition, the engine has recently been run, although some issue with the gearbox.

### Saxa Salt Wagon No.45

Dating from 1910, this wooden bodied van with distinctive pitched roof is in very poor condition, but has valuable parts. Available free to collect and restore.

Contact, Offers to Cholsey & Wallingford Railway

[Volunteer@bunkline.uk](mailto:Volunteer@bunkline.uk)

### Precision Engineers John Dunn Engineering

All types of machine shop work undertaken  
Parts manufactured and repaired



Contact us for details of our  
Westinghouse Type 'W' air-brake valve seal kits

Tel: 01430 - 424957 Find us on Facebook

Email: [theworks@johndunnengineering.co.uk](mailto:theworks@johndunnengineering.co.uk)

[www.johndunnengineering.co.uk](http://www.johndunnengineering.co.uk)



For Sale - **B4 Bogie**, suitable for accommodation.

Contact [cpegg@caledonianrailway.com](mailto:cpegg@caledonianrailway.com)

# The Light Railway Engineers

ESTABLISHED OVER  
**50**  
YEARS

FROM THE HISTORIC TO THE LATEST  
ZERO-EMISSION E-LOCOMOTIVES  
WE ARE THE NARROW-GAUGE EXPERTS



### Unrivalled for expertise, service & back-up

From the latest battery & diesel locomotives & carriages, to historic restoration projects; we can maintain and supply spares as well as be on-site when you need us for servicing, surveying, design & track laying.

Whatever your narrow-gauge project, talk to us for the friendliest expert advice, service and uncompromising back-up.



Alan Keef Ltd

Call - 01989 750757

Email - [sales@alankeef.co.uk](mailto:sales@alankeef.co.uk)

Or visit [www.alankeef.co.uk](http://www.alankeef.co.uk)

### Higham's Heritage Engineering

We are a family-run business, specialising in  
Heritage Engineering;

We offer a range of services to suit the requirements of  
Heritage Railways and Traction Engine Owners.

Our services are;

- \*Fitness to run exams
- \*Boiler/Air receiver inspections in line PSSR 2000
- \*Locomotive Repair/maintenance,
- \*Carriage repairs/maintenance,
- \*Covering Steam or Diesel at competitive rates

for information contact Matthew Higham



07864825773

[www.highamsheritageengineering.co.uk](http://www.highamsheritageengineering.co.uk)



## SR LONG WHEELBASE VANS FOR SALE



Originally acquired to provide chassis for old carriage bodies at the Tanfield Railway, but no longer required.  
**S1210, PMV**, In satisfactory order.

**S2400S, CCT**, In largely complete state but neglected, timberwork poor, brake shoes missing, link couplings missing (drawbars intact), one brake handle and its cross shaft missing. Viewing recommended.

Contact Peter Weightman,  
 email: [peter-weightman@talktalk.net](mailto:peter-weightman@talktalk.net)

## ALUMINIUM WINDOWS

**Kellett  
 Engineering  
 Company  
 Limited**



Jasper Street Works, Queens Road, Halifax HX1 4NT



Since 1946 Kellett have been designing & producing a wide range of quality framed aluminium windows for trains, locos, and many other varieties of commercial, industrial vehicles and buildings.

Please contact us, see below for details :-

[www.kellettwindows.co.uk](http://www.kellettwindows.co.uk)

sales@kellettwindows.co.uk

t el 01132 639041 or mobile 07445 425228

Victoria Inman (Managing Director)



**SEVERN LAMB  
 TRAMS INTERNATIONAL**



Heritage Style Coaches and  
 Period Locomotives

Custom Designs Built To  
 Client Specifications

Refurbishments and  
 Renovations

Maintenance and  
 Servicing



Trams & Trolleys



Park Trains



Road Trains



Custom Projects

The Visitor Transportation & Engineering Specialists

Established in 1947, Enjoyed by Generations

E: [sales@severn-lamb.com](mailto:sales@severn-lamb.com)

T: +44(0) 1789 400140

W: [www.severn-lamb.com](http://www.severn-lamb.com)



**WE ARE  
 THE BOILER  
 SPECIALISTS**

**240**  
 YEARS OF  
 COMBINED  
 EXPERTISE

**FROM MINIATURES TO FULL SIZE  
 DESIGN AND MANUFACTURE  
 WE ARE A ONE-STOP SHOP FOR WELDED BOILERS**



**UNPARALLELED QUALITY & PRECISION FROM  
 NORTHERN HERITAGE ENGINEERING LTD.**

From premium materials to cutting-edge techniques, we craft each BES-certified boiler to unrivalled standards. Our meticulous assembly and welding ensure top-tier performance.

Complete engineering & machining services for the Heritage Industry.



[www.northernheritageengineering.co.uk](http://www.northernheritageengineering.co.uk)

07712 584 821

[enquiries@nheng.co.uk](mailto:enquiries@nheng.co.uk)



FOLLOW US!



### Andrew Barclay 0-4-0 - "Tom Parry"

This locomotive was built by Andrew Barclay in 1935 and was supplied new to the Central Portland Cement Company Ltd, Kirton Lindsey in Lincolnshire. Following the withdrawal of the locomotive from service at their Houghton Regis plant in Bedfordshire in 1967 APCM donated it to the Quainton Railway Society.

This Locomotive has recently undergone an extensive nut and bolt cosmetic restoration (This loco has been restored for display purposes only). No expense spared. We had planned to keep this for a lifetime but now have had a change of circumstances and it is no longer required. The "Railway Retreats" is in vinyl so can be removed easily. The remaining pinstriping has been done by hand. Must be seen to be appreciated. only. £POA.



Personalised number plates - RA12 WAY & RA14 WAY (spelling RAILWAY). We had these number plates on our company cars for our Railway Retreats business and are now no longer required. Great for promotions. RA12 WAY - £3000.

RA14 WAY - £2500 OR £5000 for the pair.

For Serious enquiries for all call,

Ben on 07769677332.

**RAI2WAY RAI4WAY**  
**RAI2WAY RAI4WAY**

### Heritage Transport Supplies Ltd.

01509 219725 or 07798 916115.

E mail – [martynhts@btinternet.com](mailto:martynhts@btinternet.com)

#### SAFETY MANAGEMENT SYSTEMS.

I can advise on, prepare or audit Safety Management Systems (SMS) and Competency Management Systems (CMS). I specialise on the training and assessing of Safety Critical (SC) staff. I have an extensive portfolio of this type of work and I cover a very wide range of heritage railways, standard and narrow gauge, plus some commercial railway operations and new build loco projects.

Please call to discuss your specific requirements.

#### FOR SALE – STANDARD GAUGE.

**Ex S & L Manning Wardle 0-6-0ST** loco number 1762 of 1910 "Dolobran". Half way through a very extensive overhaul. Can be viewed by appointment only at the GCR(N) Ruddington. A rare opportunity to acquire a versatile and powerful 0-6-0 locomotive with 16" x 22" cylinders. This loco has all its components and it is at the rolling chassis stage of restoration.

**Ex SJ Motala 4-6-0 Swedish** B class tender loco number 1313 built 1917. This loco is complete but in need of an overhaul. It is surplus to requirements at the Lincs Wolds Rly where it can be viewed by appointment only please.

Please contact HTS Ltd for further details.



Ex SJ Motala 4-6-0 Swedish





The **LARGEST** stockist of **TOPOG-E** and **BLUE-MAX Boiler Door Joints!**



**TOPOG-E**

**HERITAGE STEAM SUPPLIES**

OFFICIAL STOCKIST AND DISTRIBUTOR

The original moulded rubber gasket  
Stops leaks and protects the life of  
steam boilers, water & air tanks

Max. Temperature:  
208°C

Recommended Working Pressure up to:  
250psi (17 Bar)

**AVAILABLE IN 350 STOCK SIZES**

**BLUE-MAX**

A 'Blue-Max' Joint will provide you all the advantages of an asbestos joint, without the problems of asbestos.

Max. Temperature:  
260°C

Max. Pressure Steam:  
450psi (31 Bar)  
Max. Pressure Cold Water:  
150psi (10 Bar)

**ZERO LEAKAGE UNDER PRESSURE**

**NON-STANDARD SIZES? IF IT'S BEEN ORDERED IN THE PAST, IT'S A STANDARD STOCK ITEM NOW!**

**WWW.HERITAGESTEAMSUPPLIES.CO.UK**

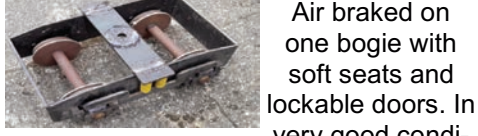
e-mail: [sales@heritagesteamsupplies.co.uk](mailto:sales@heritagesteamsupplies.co.uk)

tel: **01489 570737**

\*Inc VAT & UK Mainland only. Maximum Shipment weight 30kg  
Applies to Online orders only. Unless otherwise stated all prices exclude VAT | E&OE.



**Set of 3 X 10 1/4" gauge coaches**



Air braked on one bogie with soft seats and lockable doors. In very good condition, can be sold with or without bogies. Height 5ft 7in, Width 3ft Length 12ft

Details 07768 857189  
[rayking@tractionads.co.uk](mailto:rayking@tractionads.co.uk)

**Tested Spring Co Ltd**

Round, square & rectangular section springs for **Locomotives, Carriages and Wagons.**  
Suspension, Buffers, Valves, Piston glands & doors etc. call

Mark Woodward  
Phone **0121 557 2308**, Fax **0121 557 4031**  
Visit or leave an enquiry at  
[www.testedspring.com](http://www.testedspring.com)



**AD Castings Ltd**

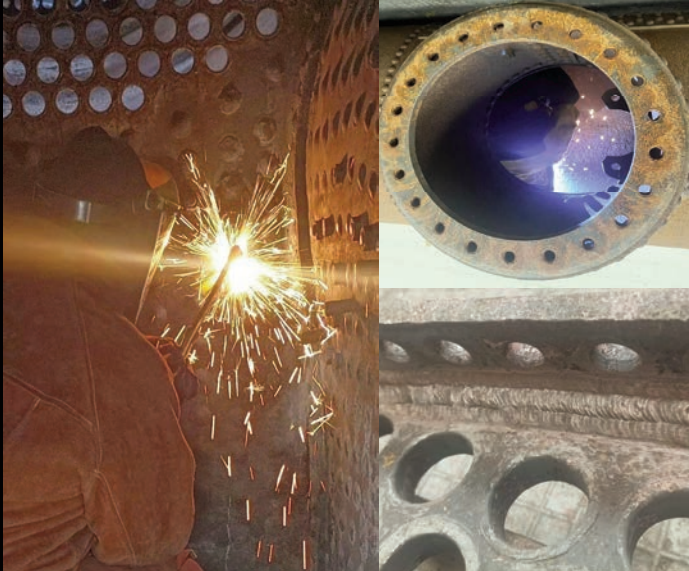
Specialising in various grades of bronze, aluminium and brass. Pattern making services available with a very quick and efficient turn around.

**Bronze castings suppliers to Flying Scotsman**  
Wellington Mill, Bolton Rd, Blackburn  
BB2 3PZ **01254 59577**  
[www.adcastings.co.uk](http://www.adcastings.co.uk)



## HERITAGE RAIL TRACTION Ltd

STEAM LOCOMOTIVE ENGINEERS Specialising in:  
*Boiler Overhaul, Repair inc Coded Welding Copper  
and Steel Cylinder Boring and Liners. In- house  
Open Forging. Machined Casting supply.  
Full Mechanical Overhaul, Large Fabrication,  
Precision and Heavy Machining  
Patternmaking, Running Repairs, On-Site Services,  
Superheater Elements, Swaged Bottle Ends &  
Flue Tubes. Single piece Longitudinal Stays.*



[www.heritagetrailtraction.co.uk](http://www.heritagetrailtraction.co.uk)

01204 396320 [Enquiries@heritagetrailtraction.co.uk](mailto:Enquiries@heritagetrailtraction.co.uk)

## Graham Morris Engineering Ltd

New boilers designed and approval obtained.  
Steam locomotive boiler inspections undertaken.  
Diesel locomotive air reservoirs examined in situ.

**Graham Morris** BSc, CEng, MIMechE  
01327 872148, [graham@gmel.co.uk](mailto:graham@gmel.co.uk)

## MUDFORDS LTD

PVC & CANVAS  
SHEETS, COVERS & CANOPIES  
MANUFACTURED TO SIZE

SUPPLIERS OF LOADSTRAPS & LIFTING SLINGS  
Email: [sales@mudfords.co.uk](mailto:sales@mudfords.co.uk)  
Tel: 0114 243 3033 Fax: 0114 244 4536  
Website: [www.mudfords.co.uk](http://www.mudfords.co.uk)



## TREFOIL STEEL Co Ltd

TINSLEY SHEFFIELD S9 1QQ

Ph 01709 830701 Fx 01709 830737

e-mail [info@trefoilsteel.com](mailto:info@trefoilsteel.com)

**SUPPLIERS TO THE RAILWAY INDUSTRY**  
Patterns, Castings and Machining Supplied.

In small to medium batch quantities.

[www.trefoilsteel.com](http://www.trefoilsteel.com)

## PISTON RINGS UK LTD



Supplier of Piston and Valve rings to the heritage Locomotive sector.  
Trusted since 1877, Piston Rings UK was known as Lockwood & Carlisle.  
Now partnered with Riley and Sons & the official supplier of rings on  
the world-famous Flying Scotsman, so you can be assured of our quality.

We specialise in low volume, custom built rings to suit your requirements.  
We can offer design and technical input to make sure you get the correct solution  
for you needs. We prioritise customer service as a core value, which our  
existing customers would be happy to recommend.

Contact Simon & the team at Piston Rings UK for a free quotation today.

01709 820 007 07749 5555 40 [sales@pistonrings.co.uk](mailto:sales@pistonrings.co.uk)

Lockwood & Carlisle Daros Industrial Rings UK Standard Piston Rings



Piston Rings UK Ltd, Unit 5 Coggin Mill Way, Rotherham, S60 1FB

## TRACTION & ROLLING STOCK ADVERTISER

Sent out FREE to Heritage Railways, Industrial Railways,  
Tram & Metros Systems also most Main Line Railways in  
the UK and their contractors or agents. Produced every  
two months, acting as a trade directory for Managers,  
Engineers and decision makers as a handy reference.  
Published the first week of Feb, April, June, Aug, Oct & Dec.

All adverts go onto our site [www.tractionads.co.uk](http://www.tractionads.co.uk)  
B&W, vehicles, parts and services start at £45 (double  
column width) 3cm depth

Editor, Ray King. Admin, Davina King. Website hosted by  
Datatech DTP. Phone 07768 857189

### Closing date for the next issue 28th March 2025

\*The details advertised in this publication have been  
supplied by the advertisers and Traction & Rolling Stock  
Advertiser cannot guarantee the details or the ownership  
of any vehicles or parts advertised. It is the responsibility  
of the reader to Independently check the quality and  
accuracy of services advertised. Data protection.

We hold the minimum amount of personal data for the  
purposes of sending our advertising paper to people  
interested in railways. We do not share any personal  
data with any third party. Any named person receiving  
this paper who wishes their name removed from our  
records please phone, email or write to the above  
address. We do not normally send to individuals home  
address unless requested, by society chairman or other  
railway officials.

**Free heritage railway vehicle lineage adverts**





# Supplying the Locomotive Industry



**A family run foundry producing high quality, competitively priced castings since 1982  
Gunmetal, Cast iron, Phosphor & Aluminium bronzes, Brass, Copper & Aluminium  
Grades we specialise in, bar, tube, square, hexagon and flat.**



**Call us on 01902 636674  
Sales@abbeyspuncast.co.uk  
www.abbeyspuncast.co.uk**



## TRAINWEIGH

TRAIN WEIGHING SYSTEMS

PART OF THE WEIGHBRIDGE SERVICES GROUP



- Sale and Hire available
- Prevent Derailment
- Monitor wheel imbalances
- For Freight, depots and/or workshop environments
- Portable or fixed systems
- Static or dynamic weighing
- Accuracies as high as 0.02%



**Tel: +44 114 321 63 64  
Email: [trainweigh@weighbridgeservices.com](mailto:trainweigh@weighbridgeservices.com)  
Web: [www.trainweigh.com](http://www.trainweigh.com)**



**Introducing our expanding range of carriage and wagon components**



Overhaul kits for all sizes of Vacuum Cylinder & Associated Valves



Vacuum Brake Hose To any required size



Huge selection of Vacuum Cylinder components



Steam Heat components



Vacuum Brake components

**Bespoke Items**

- Complete Vacuum Cylinders
- Passenger Communication Valves
- Dummy Couplings
- Guard's Brake Valves
- Release Valves
- and many more.

**Brake Blocks & Air Brake Components**

We are also suppliers of a variety of Brake Block types and UIC Air Brake Components.



**Contact**

Don't forget to check out our catalogue on our website!

sales@railwaywheelset.co.uk - 0114 303 0705 - www.railwaywheelset.co.uk

**Wanted**

Double ended veranda style brake van  
 BR Class 121 (bubble car)  
 Wooden cattle wagon  
 Flat bed wagon  
 Fuel or oil tanker

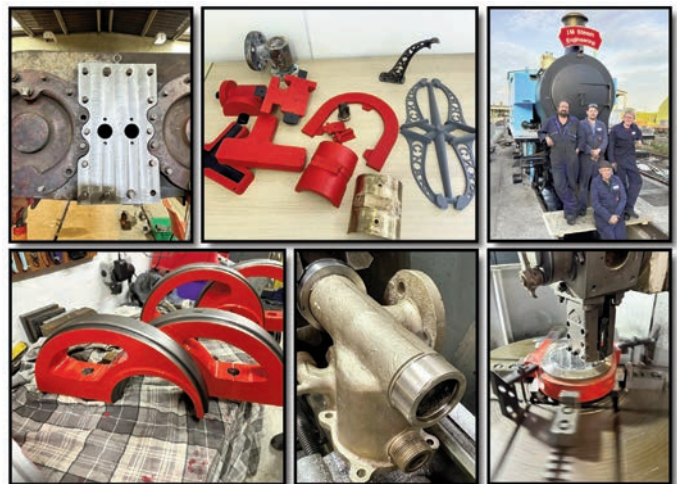
Any condition considered.  
 Contact Steve on 07780 330600  
 stephen.dunn60@icloud.com

**JM Steam Engineering Ltd**



Locomotive repair, overhaul and maintenance –  
 Pattern making – Machining – 3D CAD design –  
 CNC plasma/laser/waterjet – Hot Riveting –  
 Fabrication – Consultation.

We pride ourselves on our commitment to quality and craftsmanship, ensuring each project reflects our deep respect for steam locomotive heritage while utilizing modern methodologies.



Currently recruiting heritage railway trained staff:  
 Please email CV to address below.

EMAIL: enquiries@jmsteamengineering.co.uk  
 TELEPHONE: 07713 019465

ALL P PROFILES, UIC, CHIEFTAIN & BESPOKE  
 STATFOLD ENGINEERING LTD

**RAIL WHEEL PROFILE GAUGES**

Maximise your rolling stock's life span  
 with a certified profile gauge from our fully equipped CNC workshop.

We manufacture gauges for all standard profiles, wheel diameter gauges, and bespoke profiles from customer drawings.

All gauges supplied with a certificate of calibration.



CONTACT US FOR PRICES  
 01827 839468  
 nick@statfold.com








**17D**  
Precision Engineering :: CNC Machining

One offs, small batches, or quantity  
Call us to discuss your requirements

---

17d-engineering.co.uk 01629 825070



**SAWFORD**

SAWFORD ENGINEERING LIMITED  
PRIORS HAW ROAD  
WELDON NORTH IND. EST  
CORBY  
NORTHANTS  
NN17 5JG

TEL: (01536) 263211  
FAX: (01536) 406266  
E-MAIL: sales@sawfordengineering.co.uk  
www.sawfordengineering.co.uk

sales@sawfordengineering.co.uk  
www.sawfordengineering.co.uk

THE TOTAL ENGINEERING SOLUTION FOR INDUSTRY

We offer design, repair and overhaul of components including reverse engineering, manufacture from drawings & machining of your own components. Facilities include multi-axis machining utilising both conventional and CNC equipment.

Refractories & High Temperature Insulation Materials



**VITCAS**

- Premium IP Luting Compound for sealing white metal bearings.
- Fire Bricks and Refractory Castables for the brick arch.
- Ceramic Fibre Insulation for boilers.









Bristol  
0117 9117895  
www.vitcas.com




**HALLETT**  
**STEAM OILS**

SUPPORTING HERITAGE STEAM



MANUFACTURED IN GREAT BRITAIN



Specialists in Heritage and Steam Locomotive Lubricants

STEAM CYLINDER OILS • STEAM BEARING OILS  
DIESEL LOCOMOTIVE OILS • SPECIALIST PRODUCTS

T: +44 (0) 1246 823007 E: sales@aztecoils.co.uk

[www.hallettoil.co.uk](http://www.hallettoil.co.uk)

1969 PLASSUER AND THEURER 06-32 SLC 4 WHEEL TAMPER-LINER MACHINE, BR 73010 / DB 965742. REQUIRES RESTORATION. ABERDEEN. TO BE DISPOSED OF JULY IF NO BUYER. [jenright84@hotmail.com](mailto:jenright84@hotmail.com)

**w.h.tildesley Ltd**  
Drop Forging Specialist





**LOCOMOTIVE FORGINGS**

▶ SPECIALIST MATERIALS    ▶ COMPLEX FORGING SHAPES    ▶ SMALL BATCHES A SPECIALITY




**ENGINEERING SOLUTIONS SINCE 1874**


[www.whtildesley.com](http://www.whtildesley.com) | tel: +44 (0)1902 366440 | fax: +44 (0)1902 366216 | email: sales@whtildesley.com



# SINCE 2008 RSS LTD HAS GROWN TO PROVIDE A NATION-WIDE SERVICE INCLUDING

**Provision of shunting locomotives to the UK rail industry**, with scheduled and emergency maintenance and overhaul for client owned railway vehicles. Development of new low-emission locomotives to meet the requirements of the future.

**24/7 breakdown and recovery for the UK rail industry**. Re-railing and wheel-skating for all railway vehicles and rail incidents of all types and severities. Management of damaged or immobilised railway vehicles.

**Planning and execution for assisted rail transport**, road transport, winching and crantage

**Management of UK and international transport**, lifting and logistics projects of all sizes.

**Heavy and abnormal load haulage**, specialising in the transportation of railway vehicles.

**Lifting services**, including lift plans, design and fabrication of bespoke lifting equipment and on-site crane supervision.

**Installation and removal of railway vehicles** and abnormal loads. Jacking systems and mega-lift systems available with supervised operation.



Quotations or Additional Information please contact  
Andrew Goodman; OFFICE: 01675 475590  
MOBILE: 07974 755105

E-mail: [andrew@railwaysupportservices.co.uk](mailto:andrew@railwaysupportservices.co.uk)

Daniel Shah; MOBILE: 07794 048885

E-mail: [daniel@railwaysupportservices.co.uk](mailto:daniel@railwaysupportservices.co.uk)

Maria Anderson MOBILE: 07787 256016

E-mail: [maria@railwaysupportservices.co.uk](mailto:maria@railwaysupportservices.co.uk)

**EMERGENCY 24HOUR**

**CONTACT 0870 803 4651**

# RSS

Railway Support Services



TELEPHONE:  
01372  
375 724



PO Box 432  
FETCHAM  
KT22 2HW

## HERITAGE TRANSPORT FABRICS LTD.

**PURVEYORS OF AUTHENTIC PERIOD UPHOLSTERY  
FABRIC FOR HERITAGE TRANSPORT RESTORATION**

**NOW AVAILABLE BY THE METRE!**

- Wide range of designs from most major eras of the golden age of rail
- Designs recreated from clean, non-faded samples of original fabric
- Most patterns now available by the metre or by the roll (1.27m wide x 24m approx.)
- All enquiries welcome, get in touch to discuss your project today:  
[enquiries@heritagerailfabric.co.uk](mailto:enquiries@heritagerailfabric.co.uk)
- Full catalogue available on our website



[www.heritagerailfabric.co.uk](http://www.heritagerailfabric.co.uk)



**MK1 CK 16237**, was in use for 2023 season.  
Vac braked, fitted with Steam heat and ETH.

**MK1 RBR 1699**,  
air braked only,  
complete but in need  
of restoration.

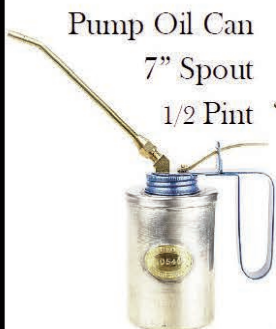
**Michael Drew, Rolling stock supervisor  
Epping Ongar Railway 07964867179**



# HETHERINGTON OIL CAN COMPANY

EMAIL: [r.mills@hetheringtonlamp.uk](mailto:r.mills@hetheringtonlamp.uk)

WEBSITE: [www.hetheringtonlamp.co.uk](http://www.hetheringtonlamp.co.uk)



Pump Oil Can  
7" Spout  
1/2 Pint

LMS Type  
Oil Feeder  
1 1/4 Pint



Oil bottle  
4 Pint - 8 Pint



Pump Oil Can  
24" Spout -  
1 Pint



Conical  
Oil Pouter  
1 - 2 Pint



Oil Feeder  
2 1/4 Pint



Tundish



Oil Pouter  
1/2 - 1 or 2 Pint



## CRAFTMASTER PAINTS

The UK's Leading  
Heritage Paint Supplier

Supplying traditional Coach  
Enamel in authentic colours to  
preserved railways nationwide.

Discounts available for Railways,  
Heritage Groups and Engine  
Owners. Please contact us for a  
pricelist.

01954 231 308

[www.craftmasterpaints.co.uk](http://www.craftmasterpaints.co.uk)  
[info@craftmasterpaints.co.uk](mailto:info@craftmasterpaints.co.uk)