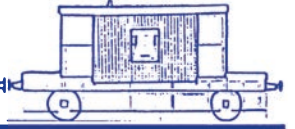




# TRACTION & ROLLING STOCK



No 153 Aug - Sept 2024

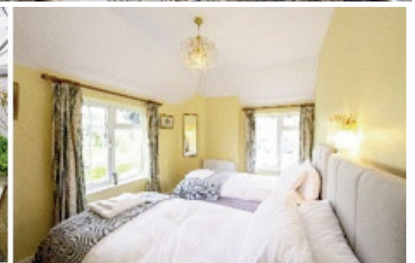
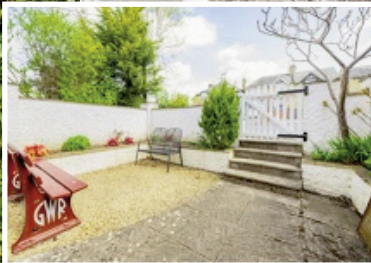
## ADVERTISER

[www.tractionads.co.uk](http://www.tractionads.co.uk)

*Broadway Station  
by Jack Baskett*



### Holiday Rental Broadway Steam Railway Cottage



Laurel Bank is a charming railway cottage overlooking Broadway Steam Railway Station in the heart of the Cotswolds. The property can sleep up to six persons; it comprises one king-size bedroom, a twin bedroom and a double sofa-bed located in the main living room. There are two shower rooms, with one on each floor of the property. Cosy rear garden laid to patio and extensive lawned front garden with mature plants. Parking for 2 vehicles.

**Please contact**

[sophie@railwaysupportservices.co.uk](mailto:sophie@railwaysupportservices.co.uk)

**for availability and pricing.**

**Refractories & High Temperature Insulation Materials**



- Premium IP Luting Compound for sealing white metal bearings.
- Fire Bricks and Refractory Castables for the brick arch.
- Ceramic Fibre Insulation for boilers.



**Bristol**  
0117 9117895  
[www.vitcas.com](http://www.vitcas.com)




**CASTING SERVICES ENGINEERING Ltd**

Cast iron, Steels, Bronzes, Gunmetal and Aluminium castings. Manifolds, Brake shoes, Axle bearings, Firegrates, etc. Restoration work, replacing worn or damaged parts. Little or no tooling costs. Castings in virtually any material. Full patternmaking, conventional & CNC machining facilities. Existing castings repaired. Welding or cold processes. We can help design or manufacture from sample or drawing. Urgent requirements with 24 hour turnaround possible. Give us a call to discuss your requirements, no job too small.

**Casting Services, Mob 07722 277631. Fax 0116 2102647**  
64 Highway Road, Thurmaston, Leicester, LE4 8FQ.  
[casting.services@ntlworld.com](mailto:casting.services@ntlworld.com) [www.casting-service.co.uk](http://www.casting-service.co.uk)

**Vale of Berkeley Railway Trust Engineering Services**

Our comprehensively equipped workshops at Sharpness can undertake a variety of engineering work. Metal milling and turning up to 40 inches dia and woodworking. As a fully volunteer staffed organisation we can't promise rapid turn round times, but we can offer very competitive prices and have many satisfied customers from heritage railways to loco owners and even international rail companies. Plus, every penny earned goes towards the Vale of Berkeley Railway!

Contact  
Graham Sturgess (machine shop manager) or  
Brian Pittaway (Woodworking shop manager)  
at [valeofberkeleyrailway@gmail.com](mailto:valeofberkeleyrailway@gmail.com)



**MCL GROUP**

- MATERIAL HANDLING
- ROLLING STOCK STORAGE & MAINTENANCE
- BATTERY SHUNTER HIRE
- TRAINING
- FABRICATION & WELDING
- RAIL WAGON CLEANING
- CET AND FUELLING
- SHOT BLASTING AND PAINTING

Contact details  
[mark@mclrail.co.uk](mailto:mark@mclrail.co.uk)  
[www.mclrail.co.uk](http://www.mclrail.co.uk)  
Tel: 020 3280 6390



**ABBEY SPUN CAST LIMITED**

*Supplying the Locomotive Industry*

We are a family run foundry producing high quality, competitively priced castings since 1982 in Gunmetal, Cast Iron, Phosphor & Aluminium bronzes, Brass, Copper and Aluminium grades. We specialize in bar, tube, square, hexagon and flat.

Call us on:- **01902 636674**  
E-Mail us at:- [sales@abbeyspuncast.co.uk](mailto:sales@abbeyspuncast.co.uk)  
Visit our website:- [www.abbeyspuncast.co.uk](http://www.abbeyspuncast.co.uk)



**UK MANUFACTURE**

ISO 9001:2015 REGISTERED

**20T Std Brake Van ex Longmoor Railway**

Built 1959 and spent its working life on the LMR in good condition and perfectly dry inside. Work was in progress to add through air brake pipes fitted brakes are vacuum but have not been used in years. Situated on the East Kent railway. Details and good offers to [r.norris@btinternet.com](mailto:r.norris@btinternet.com)



**Andrew Barclay 0-4-0 Saddle tank**



1951 built No2305 with 16" cylinders for working coal trains from main line to power station. Vacuum fitted and steam heating. Upgraded mechanical lubricators, modified cab layout, new brick arch and original makers plates  
**Complete overhaul with full boiler certificate .**  
 Now in Kent. Asking price £50,000  
 For full description call owner  
**tonatridge@hotmail.com**

**Big Boy over Sierra Nevada July 24**



**ALUMINIUM WINDOWS**

*Kellett  
Engineering  
Company  
Limited*



*Jasper Street Works, Queens Road, Halifax HX1 4NT*



Since 1946 Kellett have been designing & producing a wide range of quality framed aluminium windows for trains, locos, and many other varieties of commercial, industrial vehicles and buildings.

Please contact us, see below for details :-

**www.kellettwindows.co.uk**

sales@kellettwindows.co.uk

t el **01132 639041** or mobile **07445 425228**

Victoria Inman (Managing Director)

**HERITAGE MOTION CORKS**

Vented & non-vented  
many sizes catered for.

UK made

Please call for details,  
Tristan 07765 666444

**tristanbishopsmith@gmail.com**



**MUDFORDS LTD**

**PVC & CANVAS  
SHEETS, COVERS & CANOPIES  
MANUFACTURED TO SIZE**

**SUPPLIERS OF LOADSTRAPS & LIFTING SLINGS**

Email: sales@mudfords.co.uk

Tel: 0114 243 3033

Fax: 0114 244 4536

Website: www.mudfords.co.uk

## **60' TURNTABLE AVAILABLE**



This turntable was originally at Hull Botanical Gardens engine shed. One of the principal steam engine sheds in the Hull area, closest to the main Hull Paragon station. It opened in 1901 and was responsible for working passenger services in the area.

During 1955 one of the 55-foot turntables was replaced by this 60-foot (18 m) version and years later in 2005 was bought by the [South Devon Railway](http://www.southdevonrailway.co.uk) for future use at [Buckfastleigh](http://www.buckfastleigh.co.uk).

Deemed surplus to their own requirements, it was subsequently speculatively purchased by the North Norfolk Railway in 2016.

Now surplus to our own requirements - offers are invited for this not often available piece of railway infrastructure.

The turntable can be viewed by appointment and the purchaser will need to arrange collection and transport from Holt Station. For further details, please contact Harvey Smith, Infrastructure Manager – [hsmith@nnrailway.co.uk](mailto:hsmith@nnrailway.co.uk)

## **Mark 1 Corridor Composite 15997**

For Sale a project vehicle formerly used in a BR test train. Preserved and stored for over 30 years awaiting restoration. Has not been aggressively stripped as the intention was there to one day restore. Now surplus to future requirements. Vacuum braked and dual heated.

Located at the North Norfolk Railway.

Please see here for more details & photos

[:https://www.hops.org.uk/disposal/32](https://www.hops.org.uk/disposal/32)

Some parts missing but the bulk still in situ. Wheelsets will be changed before sale and steam heat end cocks are not included. Seating is partly removed, but replacements will be provided with the vehicle. Whilst inactive for many years, the vehicle has never had any preservation era modifications or failed restoration attempts so could represent a clean restoration project. Viewing is essential for buyers to see what is on offer.

Email Chris Moxon at [cmoxon@nnrailway.co.uk](mailto:cmoxon@nnrailway.co.uk) for questions, further information and or to view.

## **Approx. 6-8 TONNES GRANITE SETTS**

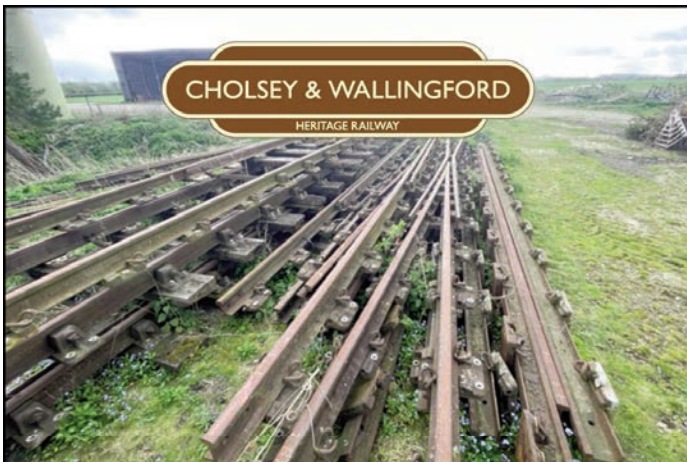
£1500, buyer collects.

For further details, please contact Harvey Smith, Infrastructure Manager – [hsmith@nnrailway.co.uk](mailto:hsmith@nnrailway.co.uk)



**CHOLSEY & WALLINGFORD**

HERITAGE RAILWAY



## **FOR SALE**

**3 x flat-bottom B switches with 1 in 8 crossings**  
(both L & R versions – site visit essential to confirm exact formats)

Subject to very little wear during lifetime. Currently stored in South Oxfordshire. Buyer would need to arrange transport.

Please contact: [volunteer@bunkline.uk](mailto:volunteer@bunkline.uk)  
for additional photos and further details.

## **Higham's Heritage Engineering**

**We are a family-run business, specialising in  
Heritage Engineering;**

**We offer a range of services to suit the requirements of  
Heritage Railways and Traction Engine Owners.**

**Our services are;**

- \*Fitness to run exams**
  - \*Boiler/Air receiver inspections in line PSSR 2000**
  - \*Locomotive Repair/maintenance,**
  - \*Carriage repairs/maintenance,**
  - \*Covering Steam or Diesel at competitive rates**
- for information contact Matthew Higham**



**07864825773**

[www.highamsheritageengineering.co.uk](http://www.highamsheritageengineering.co.uk)

# The Light Railway Engineers

ESTABLISHED OVER  
**50**  
YEARS

**FROM THE HISTORIC TO THE LATEST  
ZERO-EMISSION E-LOCOMOTIVES  
WE ARE THE NARROW-GAUGE EXPERTS**



## Unrivalled for expertise, service & back-up

From the latest battery & diesel locomotives & carriages, to historic restoration projects; we can maintain and supply spares as well as be on-site when you need us for servicing, surveying, design & track laying. Whatever your narrow-gauge project, talk to us for the friendliest expert advice, service and uncompromising back-up.



Alan Keef Ltd

Call - 01989 750757  
Email - [sales@alankeef.co.uk](mailto:sales@alankeef.co.uk)  
Or visit [www.alankeef.co.uk](http://www.alankeef.co.uk)

## NBR ENGINEERING SERVICES LIMITED DARLINGTON

### Boiler Manufacture

Fully Welded Construction' Our price includes, Design, obtaining UKCA or CE Approval & manufacture by our in-house design, fabrication and welding team. A one stop, from small Standard Gauge to large 10.25" Max diameter is 42" Min is 10" Contact David with your requirements **0330 111 0824** or [david@nbres.co.uk](mailto:david@nbres.co.uk)



One offs, small batches, or quantity  
Call us to discuss your requirements

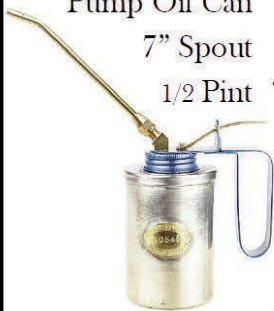
[17d-engineering.co.uk](http://17d-engineering.co.uk) 01629 825070

# HETHERINGTON OIL CAN COMPANY

EMAIL: [r.mills@hetheringtonlamp.co.uk](mailto:r.mills@hetheringtonlamp.co.uk)

WEBSITE: [www.hetheringtonlamp.co.uk](http://www.hetheringtonlamp.co.uk)

Pump Oil Can  
7" Spout  
1/2 Pint



LMS Type  
Oil Feeder  
1 1/4 Pint



Oil bottle  
4 Pint - 8 Pint



Pump Oil Can  
24" Spout -  
1 Pint



Conical  
Oil Pouter  
1 - 2 Pint



Tundish



Oil Feeder  
2 1/4 Pint



Oil Pouter  
1/2 - 1 or 2 Pint



## For sale 37029

Last used in 2022 season, The A bank turbocharger was recently overhauled & new batteries fitted in 2021



**MK1 CK 16237**, was in use for 2023 season.  
Vac braked, fitted with Steam heat and ETH.  
**MK1 RBR 1699**, air braked only, complete but  
In need of restoration.  
Please send all enquiries to  
[michaeld@eorailway.co.uk](mailto:michaeld@eorailway.co.uk)

### For Sale, HL 2918 of 1912

Blyth Harbour Commission "BCC No2"  
Located at Peak Rail, New springs, lots of  
boiler work done, incomplete but priced to sell  
For further details contact  
[andrew.civil@tiscali.co.uk](mailto:andrew.civil@tiscali.co.uk)

**Wanted 2 foot Baguely bogie frames**  
with axle wheels either braked or un-braked  
for heritage railway in Hampshire

Please contact Cliff on 07721638973



### Edmundson

Card ticket printing press. There are 2 machines, one is complete and operational, the other is incomplete, with missing parts available (not 100% sure all are there) These machines are heavy, so consideration needs to be given to uplift. I am looking for significant offers that reflect the rarity of these machine, one of which could quickly be turned to

card ticket production for the Heritage sector.  
I separately have for sale several hundred ticket printing plates, for stations all over the UK.

Contact 07759187992.

### Mk1 Buffet Car S69306, ex Class 420/1 EMU



Ex CI 420/1 built 1965. Internally converted to 240v for use as static buffet car. Good dry coach, in need of some refurbishment to return to peak condition. Currently on Commonwealth bogies but plan to swap to original B5s prior to sale. Ideal for similar use elsewhere, or Air BnB conversion.  
OIRO £10k.

For details, to view, or an offer email:-

[disposals@spavalleyrailway.co.uk](mailto:disposals@spavalleyrailway.co.uk)

**w.h.tildesley Ltd**

**Drop Forging Specialist**

LRQA  
CERTIFIED  
ISO 9001

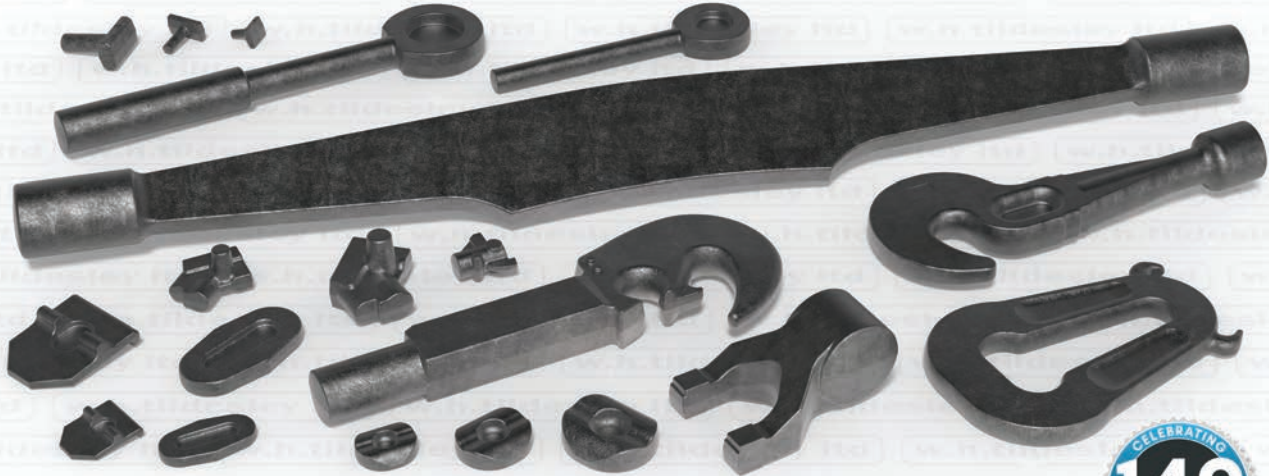
LRQA  
CERTIFIED  
AS 9100

LRQA  
CERTIFIED  
ISO 14001



# LOCOMOTIVE FORGINGS

- ▶ SPECIALIST MATERIALS
- ▶ COMPLEX FORGING SHAPES
- ▶ SMALL BATCHES A SPECIALITY



**ENGINEERING SOLUTIONS SINCE 1874**



www.whtildesley.com | tel: +44 (0)1902 366440 | fax: +44 (0)1902 366216 | email: sales@whtildesley.com



### Contacts & Opening Hours

Sales Office: 01489 570737  
E-mail: sales@heritagesteamsupplies.co.uk

**Monday-Friday** 7:30am-4:30pm  
**Saturdays** 8am-12 Noon

\*Inc VAT & UK Mainland Only, Maximum Shipment Weight 30kg.



**IF IT'S IN STOCK**  
- NEXT DAY DELIVERY

Order by 3pm Mon-Fri  
not including weekends. Excludes  
circumstances out of our control.

**NO HIDDEN COSTS**

Applies to Online Orders only. Unless otherwise stated all prices exclude VAT | E & O.E.

## LARGEST STOCKIST OF TOPOG-E & BLUE-MAX BOILER DOOR JOINTS!



AVAILABLE IN 350 STOCK SIZES

## TOPOG-E HERITAGE STEAM SUPPLIES

OFFICIAL STOCKIST AND DISTRIBUTOR

Topog-E is the original moulded rubber gasket that stops leaks and protects the life of steam boilers, water tanks and air tanks

Max. Temperature:  
208°C

Recommended Working Pressure up to:  
250psi (17 Bar)

## BLUE-MAX

A 'Blue-Max' Joint will provide you all of the advantages of an asbestos joint, without the problems of asbestos.

Max. Temperature:  
260°C

Max. Pressure Steam: 450psi (31 Bar)  
Max. Pressure Cold Water: 150psi (10 Bar)



ZERO LEAKAGE UNDER PRESSURE

**NON-STANDARD SIZES? IF IT'S BEEN ORDERED IN THE PAST, IT'S A STANDARD STOCK ITEM NOW!**

**A Single Source Solution** - [www.heritagesteamsupplies.co.uk](http://www.heritagesteamsupplies.co.uk)

# TRAINWEIGH

TRAIN WEIGHING SYSTEMS

PART OF THE WEIGHBRIDGE SERVICES GROUP



- Sale and Hire available
- Prevent Derailment
- Monitor wheel imbalances
- For Freight, depots and/or workshop environments
- Portable or fixed systems
- Static or dynamic weighing
- Accuracies as high as 0.02%



**Tel: +44 114 321 63 64**

**Email: [trainweigh@weighbridgeservices.com](mailto:trainweigh@weighbridgeservices.com)**

**Web: [www.trainweigh.com](http://www.trainweigh.com)**



## CRAFTMASTER PAINTS

**The UK's Leading  
Heritage Paint Supplier**

Supplying traditional Coach  
Enamel in authentic colours to  
preserved railways nationwide.

Discounts available for Railways,  
Heritage Groups and Engine  
Owners. Please contact us for a  
pricelist.

**01954 231 308**  
**[www.craftmasterpaints.co.uk](http://www.craftmasterpaints.co.uk)**  
**[info@craftmasterpaints.co.uk](mailto:info@craftmasterpaints.co.uk)**



# PISTON RINGS <sup>UK</sup> LTD



Supplier of Piston and Valve rings to the heritage Locomotive sector. Trusted since 1877, Piston Rings UK was known as Lockwood & Carlisle. Now partnered with Riley and Sons & the official supplier of rings on the world-famous Flying Scotsman, so you can be assured of our quality.

We specialise in low volume, custom built rings to suit your requirements. We can offer design and technical input to make sure you get the correct solution for you needs. We prioritise customer service as a core value, which our existing customers would be happy to recommend.

Contact Simon & the team at Piston Rings UK for a free quotation today.

01709 820 007 07749 5555 40 sales@pistonrings.co.uk

Lockwood & Carlisle Daros Industrial Rings UK Standard Piston Rings



Piston Rings UK Ltd, Unit 5 Coggin Mill Way, Rotherham, S60 1FB

## WANTED

Private enthusiast looking to acquire the following for preservation on a private siding;  
0-4-0DH or DE Shunter, Double Ended Veranda Style Brake Van, Wooden Cattle Wagon, Wooden Coal Wagon, Fuel/Oil Tanker, all circa 1950's/60's, any condition considered.  
Contact Steve on 07780 330600 or stephen.dunn60@icloud.com

## Tested Spring Co Ltd

Round, square & rectangular section springs for Locomotives, Carriages and Wagons. Suspension, Buffers, Valves, Piston glands & doors etc.call

Mark Woodward

Phone 0121 557 2308, Fax 0121 557 4031

Visit or leave an enquiry at

[www.testedspring.com](http://www.testedspring.com)

NORWICH 2024



## FOR SALE

LMS 6 wheel £2,500 SOLD Hawksworth Full Brake £2,500 SOLD  
Peckett 2104 – currently out of ticket requiring boiler overhaul £12,500 STILL AVAILABLE

Contact Nick 07533 891749 or email [steamad@icloud.com](mailto:steamad@icloud.com)

**TRACTION & ROLLING STOCK  
ADVERTISER**

Sent out FREE to Heritage Railways, Industrial Railways, Tram & Metros Systems also most Main Line Railways in the UK and their contractors or agents. Produced every two months, acting as a trade directory for Managers, Engineers and decision makers as a handy reference. Published the first week of Feb, April, June, Aug, Oct & Dec.

All adverts go onto our site [www.tractionads.co.uk](http://www.tractionads.co.uk) B&W, vehicles, parts and services start at £45 (double column width) 3cm depth  
Editor, Ray King. Admin, Davina King. Website hosted by Datatech DTP. Phone 07768 857189  
82 Louies Lane, Diss, IP22 4QN  
rayking@tractionads.co.uk

**Closing date for the next issue 27th Sept 2024**

\*The details advertised in this publication have been supplied by the advertisers and Traction & Rolling Stock Advertiser cannot guarantee the details or the ownership of any vehicles or parts advertised. It is the responsibility of the reader to Independently check the quality and accuracy of services advertised. Data protection. We hold the minimum amount of personal data for the purposes of sending our advertising paper to people interested in railways. We do not share any personal data with any third party. Any named person receiving this paper who wishes their name removed from our records please phone, email or write to the above address. We do not normally send to individuals home address unless requested, by society chairman or other railway officials.

**Special price for heritage railway vehicle adverts**



*Supplying the Locomotive  
Industry*



We are a family run foundry producing high quality, competitively priced castings since 1982 in Gunmetal, Cast Iron, Phosphor & Aluminium bronzes, Brass, Copper and Aluminium grades We specialize in bar, tube, square, hexagon and flat



Call us on:- **01902 636674**

E-Mail us at: [sales@abbeyspuncast.co.uk](mailto:sales@abbeyspuncast.co.uk)

Visit our website: [www.abbeyspuncast.co.uk](http://www.abbeyspuncast.co.uk)



**Railway Wheelset & Brake Ltd**  
*Suppliers of Railway Axles, Wheels, Tyres  
& Heritage Rail Components*

**Introducing our expanding range of carriage and wagon components**



*Overhaul kits for all sizes of Vacuum Cylinder & Associated Valves*



*Vacuum Brake Hose To any required size*



*Huge selection of Vacuum Cylinder components*



*Steam Heat components*



*Vacuum Brake components*

**Bespoke Items**

- Complete Vacuum Cylinders
- Passenger Communication Valves
- Dummy Couplings
- Guard's Brake Valves
- Release Valves
- and many more.

**Brake Blocks & Air Brake Components**

*We are also suppliers of a variety of Brake Block types and UIC Air Brake Components.*



**Contact**

*Don't forget to check out our catalogue on our website!*

[sales@railwaywheelset.co.uk](mailto:sales@railwaywheelset.co.uk) - 0114 303 0705 - [www.railwaywheelset.co.uk](http://www.railwaywheelset.co.uk)

## 2 car 117 DMU .

The DMU is in a semi overhauled state, 1 car is in a far better position than the other. Complete body sides and ends (requiring work on the sides, newly skinned front in 2019) and both engines run. While the other car will require a lot more work following a lot of metal work removal and replacement around 10 years ago.

Currently stored undercover.  
details

[marcus.perham@bhrrailway.co.uk](mailto:marcus.perham@bhrrailway.co.uk)



*European Agents & Distributors of Locomotive Horns from*

**AIRCHIME**

Sales-Overhaul-Maintenance

Pressure gauges, Horn control & Check valves,  
Horns & Whistles

Units 8-9, Genesis Business Park, Midland Way, Nottingham, NG7 3EF

Tel 0115 978 5333 Fax 0871 750 2387

Sales@trentinstruments.co.uk

[\*\*www.trentinstruments.co.uk\*\*](http://www.trentinstruments.co.uk)





**SAWFORD ENGINEERING LIMITED**  
 PRIORS HAW ROAD  
 WELDON NORTH IND. EST  
 CORBY  
 NORTHANTS  
 NN17 5JG  
 TEL: (01536) 263211  
 FAX: (01536) 406266  
 E-MAIL: sales@sawfordengineering.co.uk  
 www.sawfordengineering.co.uk  
 sales@sawfordengineering.co.uk  
 www.sawfordengineering.co.uk

THE TOTAL ENGINEERING SOLUTION FOR INDUSTRY

We offer design, repair and overhaul of components including reverse engineering, manufacture from drawings & machining of your own components. Facilities include multi-axis machining utilising both conventional and CNC equipment.



**AD Castings Ltd**

Specialising in various grades of bronze, aluminium and brass.

Pattern making services available with a very quick and efficient turn around.

**Bronze castings suppliers to Flying Scotsman**

Wellington Mill, Bolton Rd, Blackburn  
 BB2 3PZ 01254 59577

**www.adcastings.co.uk**



**TREFOID STEEL Co Ltd**

TINSLEY SHEFFIELD S9 1QQ

Ph 01709 830701 Fx 01709 830737

e-mail info@trefoilsteel.com

**SUPPLIERS TO THE RAILWAY INDUSTRY**  
 Patterns, Castings and Machining Supplied.

In small to medium batch quantities.

**www.trefoilsteel.com**



**SEVERN LAMB TRAMS INTERNATIONAL**



Heritage Style Coaches and  
 Period Locomotives

Custom Designs Built To  
 Client Specifications

Refurbishments and  
 Renovations

Maintenance and  
 Servicing



Trams & Trolleys



Park Trains



Road Trams



Custom Projects

The Visitor Transportation & Engineering Specialists

Established in 1947, Enjoyed by Generations

E: sales@severn-lamb.com

T: +44(0) 1789 400140

W: www.severn-lamb.com



**Precision Engineers  
 John Dunn Engineering**

All types of machine shop work undertaken  
*Parts manufactured and repaired*



Contact us for details of our  
 Westinghouse Type 'W' air-brake valve seal kits

Tel: 01430 - 424957 Find us on Facebook  
 Email: theworks@johndunnengineering.co.uk  
**www.johndunnengineering.co.uk**



**Heritage Transport Supplies Ltd**

**SAFETY MANAGEMENT SYSTEMS.**

I can advise on, prepare or audit Safety Management Systems (SMS) and Competency Management Systems (CMS). I specialise on the training and assessing of Safety Critical (SC) staff. I have an extensive portfolio of this type of work and

I now cover a wide range of heritage railways, standard and narrow gauge, plus some commercial railway operations and new build loco projects. Please call to discuss your specific requirements.

**For sale – standard gauge**

Drewry diesel locomotive, 0-4-0 DM built 1947.

Gardner 6L3 engine. Running condition but gearbox issues. Very tidy loco.

New **GWR loco Steam whistles** – large and small type will sell singly.

Contact Martyn Ashworth for further details on  
**01509 219725 or 07798 916115 o**  
 email **martynhts@btinternet.com.**

**FOR SALE**

Pair Austerity combined **feed valves**, **vacuum brake valve** (ex DMU), tools, electric and mechanical **hoists**, bullhead rail, drill bits, nuts & bolts, steam crane fittings, IH Drott parts, cast iron **lamposts**, metal sections, black iron pipe.

List from- [johnscholes@hotmail.com](mailto:johnscholes@hotmail.com)

**Graham Morris Engineering Ltd**

New boilers designed and approval obtained.  
 Steam locomotive boiler inspections undertaken.  
 Diesel locomotive air reservoirs examined in situ.

**Graham Morris** BSc, CEng, MIMechE  
 01327 872148, [graham@gmel.co.uk](mailto:graham@gmel.co.uk)