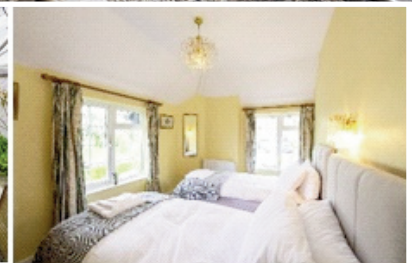
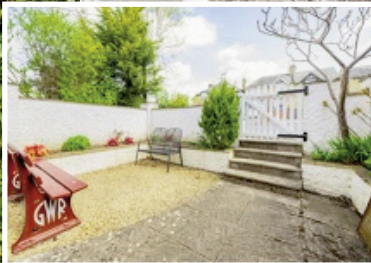


*Broadway Station
by Jack Baskett*



Holiday Rental Broadway Steam Railway Cottage



Laurel Bank is a charming railway cottage overlooking Broadway Steam Railway Station in the heart of the Cotswolds. The property can sleep up to six persons; it comprises one king-size bedroom, a twin bedroom and a double sofa-bed located in the main living room. There are two shower rooms, with one on each floor of the property. Cosy rear garden laid to patio and extensive lawned front garden with mature plants. Parking for 2 vehicles.

Please contact

sophie@railwaysupportservices.co.uk

for availability and pricing.

Refractories & High Temperature Insulation Materials



- Premium IP Luting Compound for sealing white metal bearings.
- Fire Bricks and Refractory Castables for the brick arch.
- Ceramic Fibre Insulation for boilers.



Bristol
0117 9117895
www.vitcas.com




CASTING SERVICES ENGINEERING Ltd

Cast iron, Steels, Bronzes, Gunmetal and Aluminium castings. Manifolds, Brake shoes, Axle bearings, Firegrates, etc. Restoration work, replacing worn or damaged parts. Little or no tooling costs. Castings in virtually any material. Full patternmaking, conventional & CNC machining facilities. Existing castings repaired. Welding or cold processes. We can help design or manufacture from sample or drawing. Urgent requirements with 24 hour turnaround possible. Give us a call to discuss your requirements, no job too small.

Casting Services, Mob 07722 277631. Fax 0116 2102647
64 Highway Road, Thurmaston, Leicester, LE4 8FQ.
casting.services@ntlworld.com www.casting-service.co.uk

Vale of Berkeley Railway Trust Engineering Services

Our comprehensively equipped workshops at Sharpness can undertake a variety of engineering work. Metal milling and turning up to 40 inches dia and woodworking. As a fully volunteer staffed organisation we can't promise rapid turn round times, but we can offer very competitive prices and have many satisfied customers from heritage railways to loco owners and even international rail companies. Plus, every penny earned goes towards the Vale of Berkeley Railway!

Contact
Graham Sturgess (machine shop manager) or Brian Pittaway (Woodworking shop manager) at valeofberkeleyrailway@gmail.com



MCL GROUP

- MATERIAL HANDLING
- ROLLING STOCK STORAGE & MAINTENANCE
- BATTERY SHUNTER HIRE
- TRAINING
- FABRICATION & WELDING
- RAIL WAGON CLEANING
- CET AND FUELLING
- SHOT BLASTING AND PAINTING

Contact details
mark@mclrail.co.uk
www.mclrail.co.uk
Tel: 020 3280 6390



ABBEY SPUN CAST LIMITED

Supplying the Locomotive Industry

We are a family run foundry producing high quality, competitively priced castings since 1982 in Gunmetal, Cast Iron, Phosphor & Aluminium bronzes, Brass, Copper and Aluminium grades. We specialize in bar, tube, square, hexagon and flat.

Call us on:- **01902 636674**
E-Mail us at:- sales@abbeyspuncast.co.uk
Visit our website:- www.abbeyspuncast.co.uk

UK MANUFACTURE

QMS ISO 9001:2015 REGISTERED



20T Std Brake Van ex Longmoor Railway

Built 1959 and spent its working life on the LMR in good condition and perfectly dry inside. Work was in progress to add through air brake pipes fitted brakes are vacuum but have not been used in years. Situated on the East Kent railway. Details and good offers to r.norris@btinternet.com




Andrew Barclay 0-4-0 Saddle tank



1951 built No2305 with 16" cylinders for working coal trains from main line to power station. Vacuum fitted and steam heating. Upgraded mechanical lubricators, modified cab layout, new brick arch and original makers plates
Complete overhaul with full boiler certificate .
 Now in Kent. Asking price £50,000
 For full description call owner
tonatridge@hotmail.com

ALUMINIUM WINDOWS

*Kellett
Engineering
Company
Limited*



Jasper Street Works, Queens Road, Halifax HX1 4NT



Since 1946 Kellett have been designing & producing a wide range of quality framed aluminium windows for trains, locos, and many other varieties of commercial, industrial vehicles and buildings.

Please contact us, see below for details :-

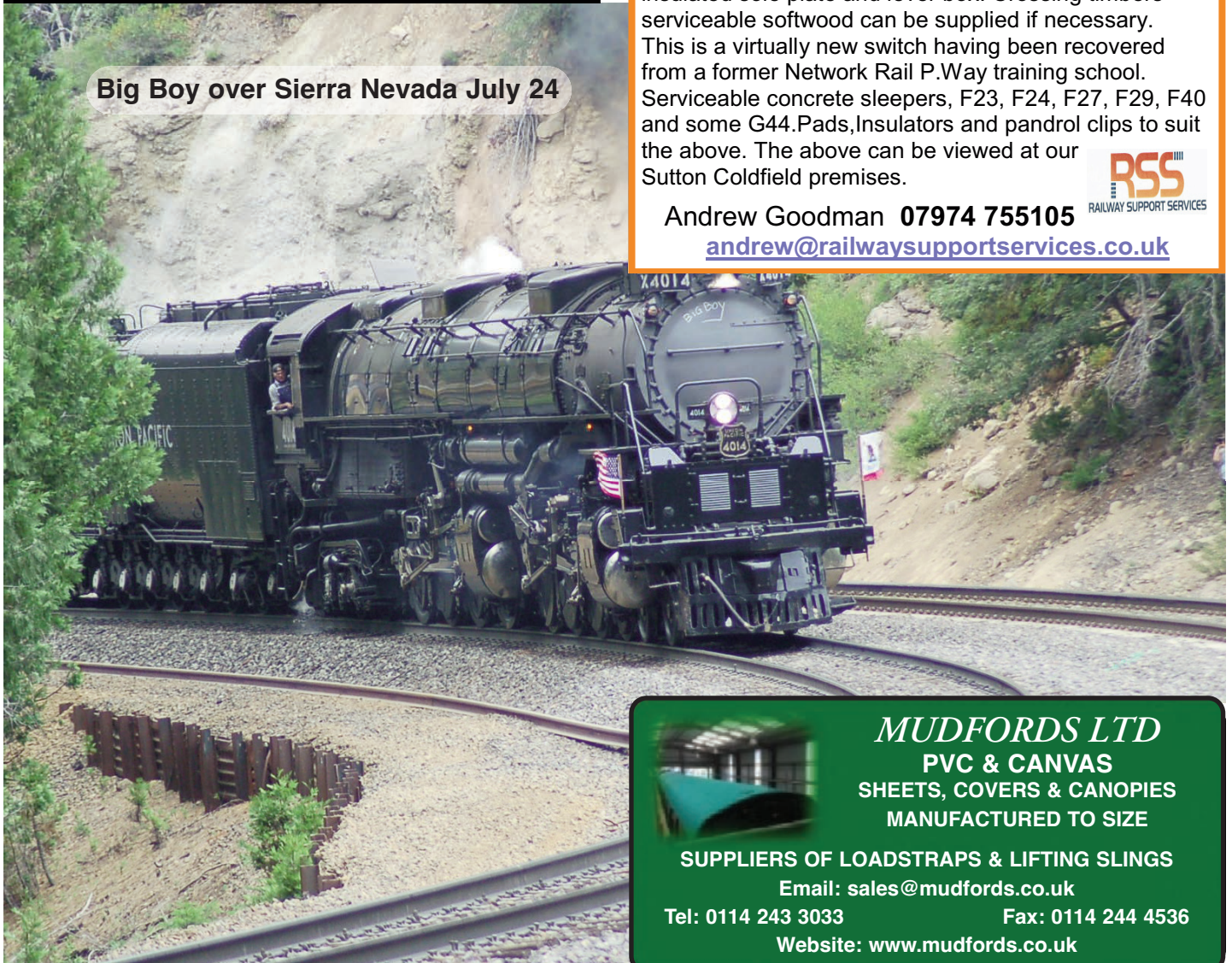
www.kellettwindows.co.uk

sales@kellettwindows.co.uk

t el 01132 639041 or mobile 07445 425228

Victoria Inman (Managing Director)

Big Boy over Sierra Nevada July 24



Right Hand Flat Bottom, BV8 Turnout in 113A rail. Comprising switches, closures, crossing, check rails, insulated sole plate and lever box. Crossing timbers serviceable softwood can be supplied if necessary. This is a virtually new switch having been recovered from a former Network Rail P.Way training school. Serviceable concrete sleepers, F23, F24, F27, F29, F40 and some G44.Pads,Insulators and pandrol clips to suit the above. The above can be viewed at our Sutton Coldfield premises.



Andrew Goodman 07974 755105

andrew@railwaysupportservices.co.uk

MUDFORDS LTD

**PVC & CANVAS
SHEETS, COVERS & CANOPIES
MANUFACTURED TO SIZE**

SUPPLIERS OF LOADSTRAPS & LIFTING SLINGS

Email: sales@mudfords.co.uk

Tel: 0114 243 3033

Fax: 0114 244 4536

Website: www.mudfords.co.uk

60' TURNTABLE AVAILABLE



This turntable was originally at Hull Botanical Gardens engine shed. One of the principal steam engine sheds in the Hull area, closest to the main Hull Paragon station. It opened in 1901 and was responsible for working passenger services in the area.

During 1955 one of the 55-foot turntables was replaced by this 60-foot (18 m) version and years later in 2005 was bought by the [South Devon Railway](http://www.southdevonrailway.co.uk) for future use at [Buckfastleigh](http://www.buckfastleigh.co.uk).

Deemed surplus to their own requirements, it was subsequently speculatively purchased by the North Norfolk Railway in 2016.

Now surplus to our own requirements - offers are invited for this not often available piece of railway infrastructure.

The turntable can be viewed by appointment and the purchaser will need to arrange collection and transport from Holt Station. For further details, please contact Harvey Smith, Infrastructure Manager – hsmith@nnrailway.co.uk

Mark 1 Corridor Composite 15997

For Sale a project vehicle formerly used in a BR test train. Preserved and stored for over 30 years awaiting restoration. Has not been aggressively stripped as the intention was there to one day restore. Now surplus to future requirements. Vacuum braked and dual heated.

Located at the North Norfolk Railway.

Please see here for more details & photos

[:https://www.hops.org.uk/disposal/32](https://www.hops.org.uk/disposal/32)

Some parts missing but the bulk still in situ. Wheelsets will be changed before sale and steam heat end cocks are not included. Seating is partly removed, but replacements will be provided with the vehicle. Whilst inactive for many years, the vehicle has never had any preservation era modifications or failed restoration attempts so could represent a clean restoration project. Viewing is essential for buyers to see what is on offer.

Email Chris Moxon at cmoxon@nnrailway.co.uk for questions, further information and or to view.

Approx. 6-8 TONNES GRANITE SETTS

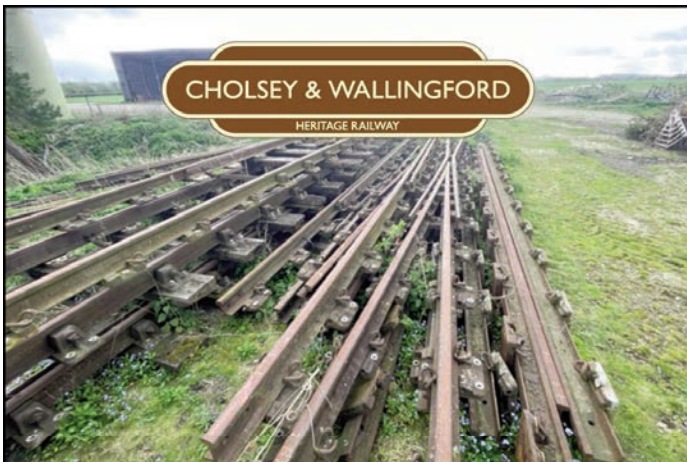
£1500, buyer collects.

For further details, please contact Harvey Smith, Infrastructure Manager – hsmith@nnrailway.co.uk



CHOLSEY & WALLINGFORD

HERITAGE RAILWAY



FOR SALE

3 x flat-bottom B switches with 1 in 8 crossings
(both L & R versions – site visit essential to confirm exact formats)

Subject to very little wear during lifetime. Currently stored in South Oxfordshire. Buyer would need to arrange transport.

Please contact: volunteer@bunkline.uk
for additional photos and further details.

Higham's Heritage Engineering

**We are a family-run business, specialising in
Heritage Engineering;**

**We offer a range of services to suit the requirements of
Heritage Railways and Traction Engine Owners.**

Our services are;

- *Fitness to run exams**
 - *Boiler/Air receiver inspections in line PSSR 2000**
 - *Locomotive Repair/maintenance,**
 - *Carriage repairs/maintenance,**
 - *Covering Steam or Diesel at competitive rates**
- for information contact Matthew Higham**



07864825773

www.highamsheritageengineering.co.uk

The Light Railway Engineers

ESTABLISHED OVER
50
YEARS

**FROM THE HISTORIC TO THE LATEST
ZERO-EMISSION E-LOCOMOTIVES
WE ARE THE NARROW-GAUGE EXPERTS**



Unrivalled for expertise, service & back-up

From the latest battery & diesel locomotives & carriages, to historic restoration projects; we can maintain and supply spares as well as be on-site when you need us for servicing, surveying, design & track laying. Whatever your narrow-gauge project, talk to us for the friendliest expert advice, service and uncompromising back-up.



Alan Keef Ltd

Call - 01989 750757
Email - sales@alankeef.co.uk
Or visit www.alankeef.co.uk

NBR ENGINEERING SERVICES LIMITED DARLINGTON

Boiler Manufacture

Fully Welded Construction' Our price includes, Design, obtaining UKCA or CE Approval & manufacture by our in-house design, fabrication and welding team. A one stop, from small Standard Gauge to large 10.25" Max diameter is 42" Min is 10" Contact David with your requirements **0330 111 0824** or david@nbres.co.uk



One offs, small batches, or quantity
Call us to discuss your requirements

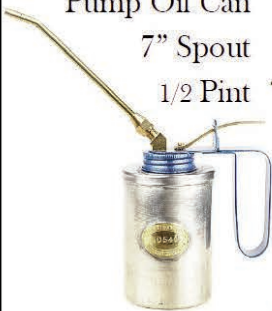
17d-engineering.co.uk 01629 825070

HETHERINGTON OIL CAN COMPANY

EMAIL: r.mills@hetheringtonlamp.co.uk

WEBSITE: www.hetheringtonlamp.co.uk

Pump Oil Can
7" Spout
1/2 Pint



LMS Type
Oil Feeder
1 1/4 Pint



Oil bottle
4 Pint - 8 Pint



Pump Oil Can
24" Spout -
1 Pint



Conical
Oil Pouter
1 - 2 Pint



Tundish

Oil Feeder
2 1/4 Pint



Oil Pouter
1/2 - 1 or 2 Pint



For sale 37029

Last used in 2022 season, The A bank turbocharger was recently overhauled & new batteries fitted in 2021



MK1 CK 16237, was in use for 2023 season.
Vac braked, fitted with Steam heat and ETH.
MK1 RBR 1699, air braked only, complete but
In need of restoration.
Please send all enquiries to
michaeld@eorailway.co.uk

For Sale, HL 2918 of 1912

Blyth Harbour Commission "BCC No2"
Located at Peak Rail, New springs, lots of
boiler work done, incomplete but priced to sell
For further details contact
andrew.civil@tiscali.co.uk

FOR SALE

Pair Austerity combined **feed valves**, **vacuum brake valve** (ex
DMU), tools, electric and mechanical **hoists**, bullhead rail,
drill bits, nuts & bolts, steam crane fittings, IH Drott parts,
cast iron **lampposts**, metal sections, black iron pipe.
List from- johnscholes@hotmail.com



Edmundson

Card ticket printing press. There
are 2 machines, one is complete
and operational, the other is
incomplete, with missing parts
available (not 100% sure all are
there) These machines are
heavy, so consideration needs
to be given to uplift. I am looking for
significant offers that reflect the
rarity of these machine, one of
which could quickly be turned to
card ticket production for the Heritage sector.

I separately have for sale several hundred ticket printing
plates, for stations all over the UK.

Contact 07759187992.

Mk1 Buffet Car S69306, ex Class 420/1 EMU



Ex CI 420/1 built 1965. Internally
converted to 240v for use as static
buffet car. Good dry coach, in need of
some refurbishment to return to peak
condition. Currently on Commonwealth
bogies but plan to swap to original B5s
prior to sale. Ideal for similar use
elsewhere, or Air BnB conversion.
OIRO £10k.

For details, to view, or an offer
email:-

disposals@spavalleyrailway.co.uk

w.h.tildesley Ltd

Drop Forging Specialist

LRQA
CERTIFIED
ISO 9001

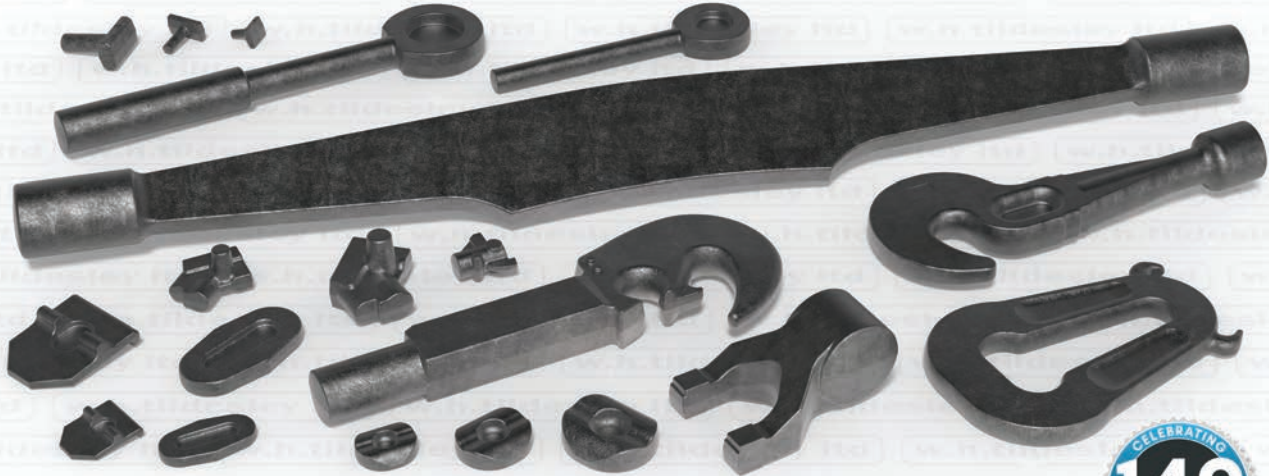
LRQA
CERTIFIED
AS 9100

LRQA
CERTIFIED
ISO 14001



LOCOMOTIVE FORGINGS

- ▶ SPECIALIST MATERIALS
- ▶ COMPLEX FORGING SHAPES
- ▶ SMALL BATCHES A SPECIALITY



ENGINEERING SOLUTIONS SINCE 1874



www.whtildesley.com | tel: +44 (0)1902 366440 | fax: +44 (0)1902 366216 | email: sales@whtildesley.com



Contacts & Opening Hours

Sales Office: 01489 570737
E-mail: sales@heritagesteamsupplies.co.uk

Monday-Friday 7:30am-4:30pm
Saturdays 8am-12 Noon

*Inc VAT & UK Mainland Only, Maximum Shipment Weight 30kg.



FREE shipping
ONLINE
orders over
£100*

IF IT'S IN STOCK
- NEXT DAY DELIVERY

Order by 3pm
Mon-Fri
not including weekends. Excludes
circumstances out of our control.

NO HIDDEN COSTS

Applies to Online Orders only. Unless otherwise stated all prices exclude VAT | E & O.E.

LARGEST STOCKIST OF TOPOG-E & BLUE-MAX BOILER DOOR JOINTS!



AVAILABLE IN 350 STOCK SIZES

TOPOG-E HERITAGE STEAM SUPPLIES

OFFICIAL STOCKIST AND DISTRIBUTOR

Topog-E is the original moulded rubber gasket that stops leaks and protects the life of steam boilers, water tanks and air tanks

Max. Temperature:
208°C

Recommended Working Pressure up to:
250psi (17 Bar)

BLUE-MAX

A 'Blue-Max' Joint will provide you all of the advantages of an asbestos joint, without the problems of asbestos.

Max. Temperature:
260°C

Max. Pressure Steam: 450psi (31 Bar)
Max. Pressure Cold Water: 150psi (10 Bar)



ZERO LEAKAGE UNDER PRESSURE

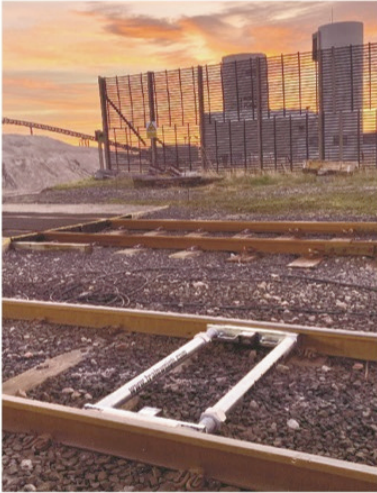
NON-STANDARD SIZES? IF IT'S BEEN ORDERED IN THE PAST, IT'S A STANDARD STOCK ITEM NOW!

A Single Source Solution - www.heritagesteamsupplies.co.uk

TRAINWEIGH

TRAIN WEIGHING SYSTEMS

PART OF THE WEIGHBRIDGE SERVICES GROUP



- Sale and Hire available
- Prevent Derailment
- Monitor wheel imbalances
- For Freight, depots and/or workshop environments
- Portable or fixed systems
- Static or dynamic weighing
- Accuracies as high as 0.02%



Tel: +44 114 321 63 64

Email: trainweigh@weighbridgeservices.com

Web: www.trainweigh.com



CRAFTMASTER PAINTS

The UK's Leading
Heritage Paint Supplier

Supplying traditional Coach
Enamel in authentic colours to
preserved railways nationwide.

Discounts available for Railways,
Heritage Groups and Engine
Owners. Please contact us for a
pricelist.

01954 231 308
www.craftmasterpaints.co.uk
info@craftmasterpaints.co.uk

PISTON RINGS ^{UK} LTD



Supplier of Piston and Valve rings to the heritage Locomotive sector. Trusted since 1877, Piston Rings UK was known as Lockwood & Carlisle. Now partnered with Riley and Sons & the official supplier of rings on the world-famous Flying Scotsman, so you can be assured of our quality.

We specialise in low volume, custom built rings to suit your requirements. We can offer design and technical input to make sure you get the correct solution for you needs. We prioritise customer service as a core value, which our existing customers would be happy to recommend.

Contact Simon & the team at Piston Rings UK for a free quotation today.

01709 820 007 07749 5555 40 sales@pistonrings.co.uk

Lockwood & Carlisle Daros Industrial Rings UK Standard Piston Rings



Piston Rings UK Ltd, Unit 5 Coggin Mill Way, Rotherham, S60 1FB

WANTED

Private enthusiast looking to acquire the following for preservation on a private siding;
0-4-0DH or DE Shunter, Double Ended Veranda Style Brake Van, Wooden Cattle Wagon, Wooden Coal Wagon, Fuel/Oil Tanker, all circa 1950's/60's, any condition considered.
Contact Steve on 07780 330600 or stephen.dunn60@icloud.com

Tested Spring Co Ltd

Round, square & rectangular section springs for Locomotives, Carriages and Wagons. Suspension, Buffers, Valves, Piston glands & doors etc.call

Mark Woodward

Phone 0121 557 2308, Fax 0121 557 4031

Visit or leave an enquiry at

www.testedspring.com

NORWICH 2024



FOR SALE

LMS 6 wheel £2,500 SOLD Hawksworth Full Brake £2,500 SOLD
Peckett 2104 – currently out of ticket requiring boiler overhaul £12,500 STILL AVAILABLE

Contact Nick 07533 891749 or email steamad@icloud.com

**TRACTION & ROLLING STOCK
ADVERTISER**

Sent out FREE to Heritage Railways, Industrial Railways, Tram & Metros Systems also most Main Line Railways in the UK and their contractors or agents. Produced every two months, acting as a trade directory for Managers, Engineers and decision makers as a handy reference. Published the first week of Feb, April, June, Aug, Oct & Dec.

All adverts go onto our site www.tractionads.co.uk B&W, vehicles, parts and services start at £45 (double column width) 3cm depth
Editor, Ray King. Admin, Davina King. Website hosted by Datatech DTP. Phone 07768 857189
82 Louies Lane, Diss, IP22 4QN
rayking@tractionads.co.uk

Closing date for the next issue 27th Sept 2024

*The details advertised in this publication have been supplied by the advertisers and Traction & Rolling Stock Advertiser cannot guarantee the details or the ownership of any vehicles or parts advertised. It is the responsibility of the reader to Independently check the quality and accuracy of services advertised. Data protection. We hold the minimum amount of personal data for the purposes of sending our advertising paper to people interested in railways. We do not share any personal data with any third party. Any named person receiving this paper who wishes their name removed from our records please phone, email or write to the above address. We do not normally send to individuals home address unless requested, by society chairman or other railway officials.

Special price for heritage railway vehicle adverts



*Supplying the Locomotive
Industry*



We are a family run foundry producing high quality, competitively priced castings since 1982 in Gunmetal, Cast Iron, Phosphor & Aluminium bronzes, Brass, Copper and Aluminium grades We specialize in bar, tube, square, hexagon and flat



Call us on:- **01902 636674**

E-Mail us at: sales@abbeyspuncast.co.uk

Visit our website: www.abbeyspuncast.co.uk



Railway Wheelset & Brake Ltd
*Suppliers of Railway Axles, Wheels, Tyres
& Heritage Rail Components*

Introducing our expanding range of carriage and wagon components



Overhaul kits for all sizes of Vacuum Cylinder & Associated Valves



Vacuum Brake Hose To any required size



Huge selection of Vacuum Cylinder components



Steam Heat components



Vacuum Brake components

Bespoke Items

- Complete Vacuum Cylinders
- Passenger Communication Valves
- Dummy Couplings
- Guard's Brake Valves
- Release Valves
- and many more.

Brake Blocks & Air Brake Components

We are also suppliers of a variety of Brake Block types and UIC Air Brake Components.



Contact

Don't forget to check out our catalogue on our website!

sales@railwaywheelset.co.uk - 0114 303 0705 - www.railwaywheelset.co.uk



European Agents & Distributors of Locomotive Horns from

AIRCHIME

Sales-Overhaul-Maintenance

Pressure gauges, Horn control & Check valves,
Horns & Whistles

Units 8-9, Genesis Business Park, Midland Way, Nottingham, NG7 3EF

Tel 0115 978 5333 Fax 0871 750 2387

Sales@trentinstruments.co.uk

www.trentinstruments.co.uk

2 car 117 DMU .

The DMU is in a semi overhauled state, 1 car is in a far better position than the other. Complete body sides and ends (requiring work on the sides, newly skinned front in 2019) and both engines run. While the other car will require a lot more work following a lot of metal work removal and replacement around 10 years ago.

Currently stored undercover.
details

marcus.perham@bhrailway.co.uk

Wanted 2 foot Baguely bogie frames
with axle wheels either braked or un-braked
for heritage railway in Hampshire

Please contact Cliff on 07721638973



2 X Rolls Royce C8 SFL engines
recently removed from 0-6-0 DH in working order

Andrew Goodman 07974 755105

andrew@railwaysupportservices.co.uk

11T capacity carriage lifting Jack's



4 X with control panel. Currently in test
until February 2025.

Offers around £24,000 plus VAT considered.

Andrew Goodman 07974 755105

andrew@railwaysupportservices.co.uk



4 X Class 108 DMU drive bogie
with good wheelsets and Vacuum fitted.
Leyland 680 engine parts, many new.

Andrew Goodman 07974 755105

andrew@railwaysupportservices.co.uk



SAWFORD ENGINEERING LIMITED
 PRIORS HAW ROAD
 WELDON NORTH IND. EST CORBY
 NORTHANTS NN17 5JG
 TEL: (01536) 263211
 FAX: (01536) 406266
 E-MAIL: sales@sawfordengineering.co.uk
 www.sawfordengineering.co.uk
 sales@sawfordengineering.co.uk
 www.sawfordengineering.co.uk

THE TOTAL ENGINEERING SOLUTION FOR INDUSTRY

We offer design, repair and overhaul of components including reverse engineering, manufacture from drawings & machining of your own components. Facilities include multi-axis machining utilising both conventional and CNC equipment.



TREFOIL STEEL Co Ltd
 TINSLEY SHEFFIELD S9 1QQ

Ph 01709 830701 Fx 01709 830737
 e-mail info@trefoilsteel.com

SUPPLIERS TO THE RAILWAY INDUSTRY
 Patterns, Castings and Machining Supplied.
 In small to medium batch quantities.
 www.trefoilsteel.com

Precision Engineers
John Dunn Engineering

All types of machine shop work undertaken
Parts manufactured and repaired



Contact us for details of our
 Westinghouse Type 'W' air-brake valve seal kits

Tel: 01430 - 424957 Find us on Facebook
 Email: theworks@johndunnengineering.co.uk
 www.johndunnengineering.co.uk



Heritage Transport Supplies Ltd

SAFETY MANAGEMENT SYSTEMS.

I can advise on, prepare or audit Safety Management Systems (SMS) and Competency Management Systems (CMS). I specialise on the training and assessing of Safety Critical (SC) staff. I have an extensive portfolio of this type of work and I now cover a wide range of heritage railways, standard and narrow gauge, plus some commercial railway operations and new build loco projects. Please call to discuss your specific requirements.

For sale – standard gauge

Drewry diesel locomotive, 0-4-0 DM built 1947. Gardner 6L3 engine. Running condition but gearbox issues. Very tidy loco.
 New **GWR loco Steam whistles** – large and small type will sell singly.

Contact Martyn Ashworth for further details on
01509 219725 or 07798 916115 o
 email martynhts@btinternet.com.



AD Castings Ltd

Specialising in various grades of bronze, aluminium and brass.

Pattern making services available with a very quick and efficient turn around.

Bronze castings suppliers to Flying Scotsman

Wellington Mill, Bolton Rd, Blackburn
 BB2 3PZ **01254 59577**

www.adcastings.co.uk



SEVERN LAMB
TRAMS INTERNATIONAL



Heritage Style Coaches and
 Period Locomotives.

Custom Designs Built To
 Client Specifications

Refurbishments and
 Renovations

Maintenance and
 Servicing



Trams & Trolleys



Park Trains



Road Trams



Custom Projects

The Visitor Transportation & Engineering Specialists
 Established in 1947, Enjoyed by Generations

E: sales@severn-lamb.com
 T: +44(0) 1789 400140
 W: www.severn-lamb.com



Southern Bo-Rail Flat wagon, 64ft long, non braked but could be through pipe fitted. Offers around £6,500.plus VAT.

BR Low-Mac Wagon 20t capacity. Vac Braked. Offers around £7,500 plus VAT.

BR Tube Wagon
 Delivery can be arranged



Andrew Goodman **07974 755105**

andrew@railwaysupportservices.co.uk

Graham Morris Engineering Ltd

New boilers designed and approval obtained.
 Steam locomotive boiler inspections undertaken.
 Diesel locomotive air reservoirs examined in situ.

Graham Morris BSc, CEng, MIMechE
 01327 872148, graham@gmel.co.uk